



# Application Guide

## pro clima CONTEGA EXO exterior connection tape



### WHAT FOR?

For exterior windproof sealing of thermally insulated joints when installing windows and doors. In combination with CONTEGA FC or CONTEGA SL also suitable for sealing joints in masonry and timber construction in accordance with the high quality standard of the Germany RAL recommendations.

### WHAT ON

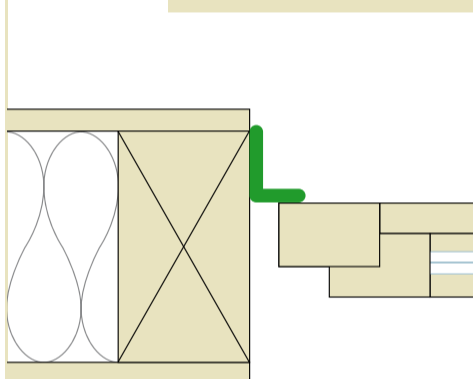
A permanent bond is achieved on all pro clima roof lining and wall lining membranes, planed and painted wood, high density plastic, metal or hardboard (chipboard, OSB and veneer plywood and MDF board).

### ADVANTAGES

- ✓ Vapour permeable sealing of outdoor window and door joints
- ✓ Monolithic TEEE functional membrane - active moisture transport
- ✓ RAL-compliant in combination with CONTEGA FC/SL indoors
- ✓ Can be plastered over on the fleece side
- ✓ With three adhesive tapes it is very versatile in timber and masonry construction

SEE OVER FOR FURTHER DETAILS >>

### Situation A Timber construction, window is already in place, EXO is being added subsequently



If the window is already in place, EXO is applied on the cladding frame.

#### Removing the inner layer of release film



1 Pull off one strip of release film on the membrane side (smooth side).

#### Sticking to the cladding frame



2 Position the full width of the tape on the cladding frame and stick down the first side of the jamb.

#### Folding the corner



3 Fold the tape in the corners, making sure that there are no folds or creases to ensure a wind-tight bond around the entire window frame, then continue sticking it to the straight section of the cladding frame. At the end, cut the tape off leaving an overlap of approx. 5 cm.

#### Sticking to the reveal



4 Remove the second strip of release film on the smooth side of the membrane and stick the tape all the way around the reveal.

#### Pressing firmly to secure the tape



5 Press firmly to secure the tape to the reveal and the window frame, for example using a pro clima PRESSIFIX to do the job effectively and to protect your hands.

#### Sticking the ends



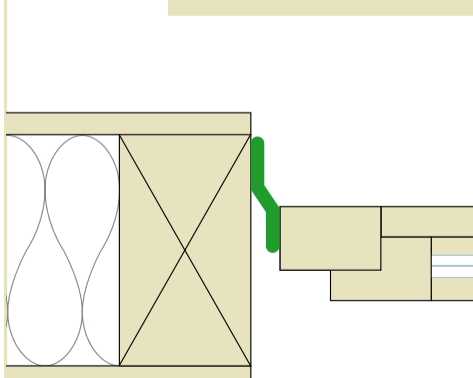
6 Partially remove the outermost strip of release film on the membrane side. ORCON F does not stick to the release film! Apply a bead of ORCON F joint adhesive approx. 5 mm thick between the overlapping ends of the tape.

#### Sticking the ends



7 Press the joint firmly together for a wind-tight seal.

### Situation B Timber construction, EXO is already stuck to the sides of the window



EXO has already been stuck to the sides of the cladding frame, e.g. by the window manufacturer.

#### Folding the corner



1 Fold the tape in the corners then remove the release film in the corners and tape one side of the tape to the other, making sure that there are no folds or creases to ensure a wind-tight bond around the entire window frame.

#### Sticking to the reveal



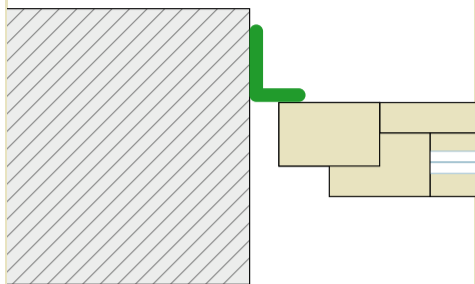
2 Remove the release film on the smooth side of the membrane and stick the tape all the way around the reveal so that it forms a rainproof and wind-tight bond. Press firmly to secure the tape.

#### Sticking the ends



3 Apply a bead of ORCON F joint adhesive approx. 5 mm thick between the overlapping ends of the tape. Press the tape into the adhesive.

**Situation C** Masonry construction, window is already in place, EXO is being added subsequently



If the window is already in place, EXO is applied on the cladding frame.

**1 Sticking to the window frame**

Pull off one strip of release film on the membrane side (smooth side). Position the full width of the tape on the window frame and bond the tape to the first side of the window reveal.

**2 Removing the inner layer of release film**

Remove the inner strips of release film on the first side of the reveal until you reach the first corner.

**3 Forming the corner**

Fold the tape in the corners, making sure that there are no folds or creases to ensure a wind-tight bond around the entire window frame, then continue sticking it to the straight section of the window frame. At the end, cut the tape off leaving an overlap of approx. 5 cm.

**4 Applying adhesive to the entire surface**

Apply a bead of ORCON F joint adhesive to the window jamb in a zig-zag pattern.

**5 Laying the tape into the adhesive**

Remove the inner strips of release film all the way round. ORCON F does not stick to the film! Lay the tape into the adhesive.

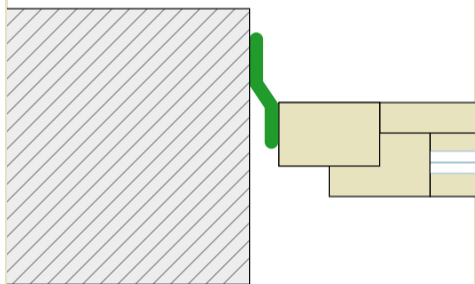
**6 Sticking the ends**

Apply a bead of ORCON F joint adhesive approx. 5 mm thick between the overlapping ends of the tape. Lay the tape into the adhesive.

**7 Removing the outermost strip of release film**

Remove the outer strips of release film (on the fleece side) all the way round. Plaster does not stick to the release film! You can now plaster over the EXO.

**Situation D** Masonry construction, EXO is already stuck to the sides of the window



EXO has already been stuck to the sides of the window frame, e.g. by the window manufacturer.

**1 Removing the inner layer of release film**

To prepare for sticking the tape to the window jamb using ORCON F joint adhesive, remove the release film on the blank side of the membrane. ORCON F does not stick to the release film!

**2 Applying adhesive to the entire surface**

Apply a bead of ORCON F joint adhesive to the window jamb in a zig-zag pattern.

**3 Forming the corner**

Fold the tape in the corners then remove the release film in the corners and tape one side of the tape to the other, making sure that there are no folds or creases to ensure a wind-tight bond around the entire window frame.

**4 Laying the tape into the adhesive**

Lay the tape into the adhesive.

**5 Sticking the ends**

Apply a bead of ORCON F joint adhesive approx. 5 mm thick between the overlapping ends of the tape. Press the tape into the adhesive.

**6 Sticking the corners**

Stick the folded and overlapping corners together with ORCON F to make it easier to plaster over the tape later.

**7 Finished!**

Now the joint is finished, diffusion-permeable, rain-proof and wind-tight. You can now plaster over the tape.

**COMPOSITION**

CONTEGA EXO consists of a double-layer specialist membrane made from PP fleece and TEEE functional film. The integrated adhesive tape is made from pure acrylate that is waterproof non-ageing and free of solvents or softeners. This, combined with high temperature resistance, ensures a strong, durable bond. The high final strength of the bond is reached within 24 hours.

**SUBSTRATES**

To ensure a durable, windtight bond with connection tape the substrates onto which the tape is applied should be load bearing and stable, dry, smooth and free from dust, silicon and grease. Bonding to frozen surfaces is not possible. The applicator is responsible for checking the suitability of the substrate. Adhesion tests are recommended.

**CONDITIONS**

The bonds should not be subjected to tensile strain. Press firmly to secure the tape, ensuring there is sufficient back-pressure. Rainproof and wind- or airtight seals can only be achieved if this connection tape is laid without folds or creases and are uninterrupted. Ventilate regularly to prevent build-up of excessive humidity and use a dryer if necessary.

The information provided here is based on practical experience and the current state of knowledge. We reserve the right to make changes to the recommendations given or to make alterations due to technical developments and associated improvements in the quality of our products. We would be happy to inform you of the current technical state of the art at the time you use our products.

If you have any questions, please call the pro clima technical hotline Ireland and UK:  
Phone: +353 46 9432104  
Fax: +353 46 9432435  
info@ecologicalbuildingsystems.com

Further information about application and construction is given in the pro clima planning documentation.

(Please also take note of the recommendations contained in the current pro clima application matrix.)

Characteristic	Value
Backing	Double-layer specialist membrane made of PP fleece and TEEE functional film
mvtr value	0,25 MNs/g
Water column	> 2.500 mm
Temperature resistance	Long term -40°C to +90°C
Application temperature	> -10°C
Colour	Dark grey
UV stability / outdoor exposure	3 months
Storage	Cool and dry

ID 12576 - Last updated: 04/2010