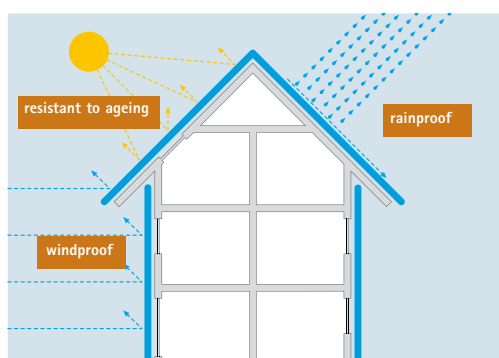


# Safety for roofs and walls pro clima SOLITEX

diffusion-permeable, tear-resistant, rainproof

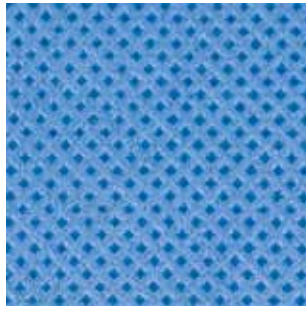


pro clima SOLITEX sarking membrane / roof lining membrane / wall lining membrane



pro clima SOLITEX membranes have an impressive range of basic characteristics: diffusion-permeable, rainproof, highly tear-resistant. Quick and safe to work with.

## Cover fleece



The robust polypropylene microfibre cover fleece is water-resistant and provides optimum protection against the penetration of damp. It protects the specialist film below from damage and UV radiation.

The honeycomb structure guarantees non-slip properties even when wet. It is coloured blue to prevent dazzling when it is being laid.

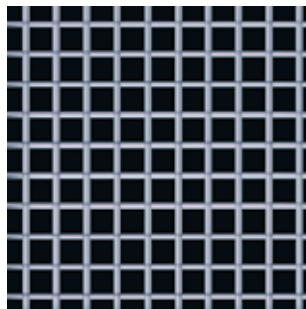
## Specialist film



A stretchable, diffusion permeable specialist film gives the pro clima SOLITEX membranes extremely high resistance to water. At the same time, vapour can pass through it almost unrestricted.

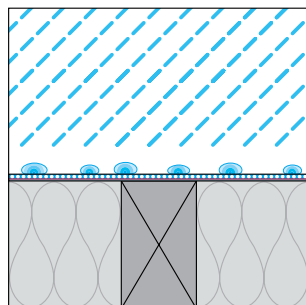
In addition, the specific properties of the specialist film ensure the excellent wind resistance properties of the pro clima SOLITEX membranes.

## Reinforcement material



The tightly meshed polypropylene reinforcement material doubles the overall strength of the SOLITEX PLUS membrane. If it is used as a sarking membrane, the material is highly effective at preventing the membrane being broken by nails or feet.

## No tent effect



The fact that the pro clima SOLITEX membranes are multi-layered prevents the tent effect (tent canvases leak at points of contact). The pro clima SOLITEX membranes can be supported across the whole surface.

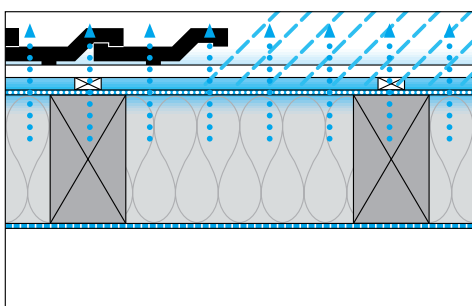
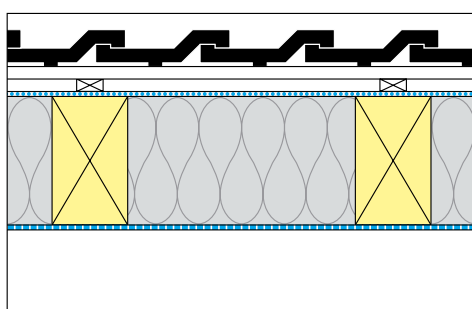
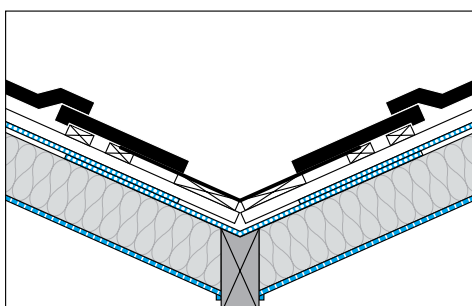
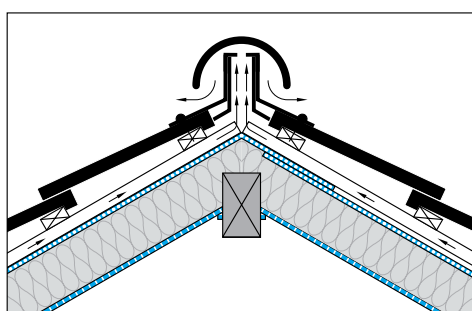
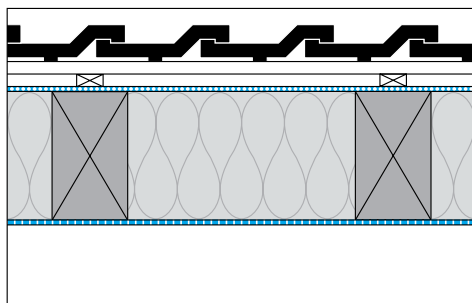
**Full rafter insulation**

The high diffusion-permeability of the pro clima SOLITEX membranes (sarking membranes, roof lining membranes and wall lining membranes) means that insulation does not need to be back-ventilated. All pro clima SOLITEX sarking and roof lining membranes can be laid directly onto heat insulation, which means the insulation can take up the whole height of the rafters. However, in uninsulated lofts, it is worthwhile fitting a roof ridge and rake ventilation system in order to ventilate the roof area. There is no need for complicated, often ineffective ventilation details on the eaves, the roof ridge, the valley, the rake and the roof fittings.

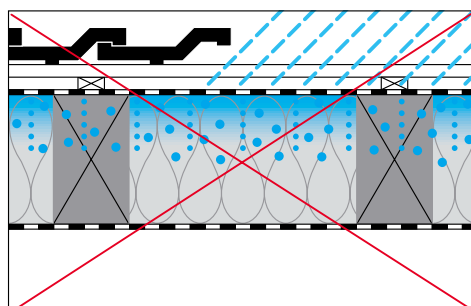
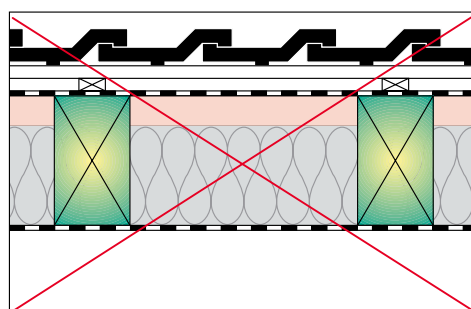
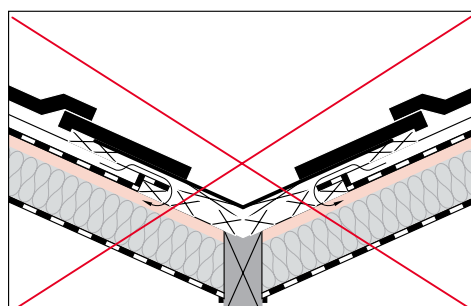
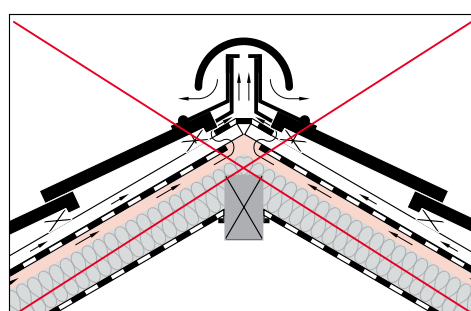
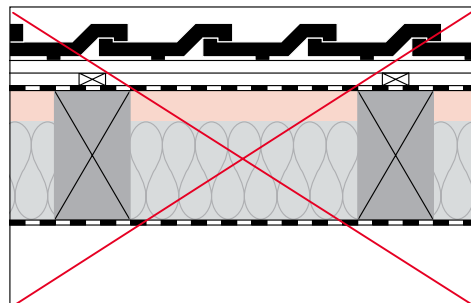
In the case of full rafter insulation, the rafters are protected against insects, which means a chemical treatment of the wood is not generally necessary.

The design is such that the dampness can dry more easily and quickly to the outside. This is an advantage both during construction (when the timber may be damp) and during the life of the building.

**Full rafter insulation**



**Partial rafter insulation**





## SOLITEX MENTO

Composition	three-ply combination of PP microfibre fleece, special TEEE-film and PP microfibre fleece	
Surface weight	EN 1849-2	110 g/m <sup>2</sup>
Tear-resistance	EN 12311-1	XD: 170 N/5 cm, MD: 205 N/5 cm
Resistance to nails tearing out	EN 12310-1	XD: > 100 N, MD: > 100 N
s <sub>d</sub> -value	EN ISO 12572	0,05 m
Water-resistance	EN 1928	W1 passed water column > 2500 mm
Fire class	EN 13501-1	E
UV stability and outdoor exposure	3 months	
Temperature-resistance	-40°C to +100°C	
Dimensions	roll width 1,50 m	roll length 50 m
	roll area 75 m <sup>2</sup>	roll weight 9 kg

The pro clima SOLITEX MENTO consists of a polypropylene microfibre cover fleece, a diffusion-permeable TEEE-film and a polypropylenemicrofibre cover fleece on the underside.

With a tear-resistance of more than 170 N/5 cm, the pro clima SOLITEX MENTO is excellently suited to us as a roof lining membrane on linings and heat insulation materials.



## SOLITEX UD

Composition	three-ply combination of PP microfibre fleece, special TEEE-film and PP microfibre fleece	
Surface weight	EN ISO 1849-2	140 g/m <sup>2</sup>
Tear-resistance	EN ISO 12311-1	XD: 200 N/5 cm, MD: 270 N/5 cm
Resistance to nails tearing out	EN 12310-1	XD: > 130 N, MD: > 130 N
s <sub>d</sub> -value	EN 12572	0,02 m humidity variable
Water-resistance	EN 1928	W1 passed water column > 2500 mm
Fire class	EN 13501-1	E
UV stability and outdoor exposure	3 months	
Temperature-resistance	-40°C to +100°C	
Dimensions	roll width 1,50 m	roll length 50 m
	roll area 75 m <sup>2</sup>	roll weight 12 kg

The pro clima SOLITEX UD consists of a polypropylene microfibre cover fleece, a diffusion-permeable TEEE-film and a polypropylenemicrofibre cover fleece on the underside.

With a tear-resistance of more than 200 N/5 cm, the pro clima SOLITEX UD is excellently suited to us as a roof lining membrane on linings and heat insulation materials.



## SOLITEX PLUS

Composition	four-ply combination of PP microfibre fleece, special TEEE-film, PP reinforcement material and PP microfibre fleece	
Surface weight	EN 1849-2	170 g/m <sup>2</sup>
Tear-resistance	EN 12311-1	XD: 350 N/5 cm, MD: 485 N/5 cm
Resistance to nails tearing out	EN 12310-1	XD: > 350 N, MD: > 350 N
s <sub>d</sub> -value	EN 12572	0,02 m humidity variable
Water-resistance	EN 1928	W1 passed water column > 2500 mm
Fire class	EN 13501-1	E
UV stability and outdoor exposure	3 months	
Temperature-resistance	-40°C to +100°C	
Dimensions	roll width 1,50 m	roll length 50 m
	roll area 75 m <sup>2</sup>	roll weight 13 kg

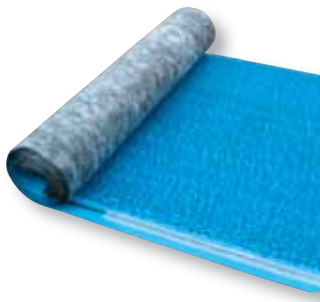
The tight-mesh polypropylene reinforcement material in the pro clima SOLITEX PLUS considerably improves the overall strength of the membrane and guarantees extreme resistance to nails and feet when used either as a roof lining membrane or as a sarking membrane.



## SOLITEX WA

Composition	pp microfibre fleece	
Surface weight	EN 1849-2	100 g/m <sup>2</sup>
Tear-resistance	EN 12311-1	XD: 150 N/5 cm, MD: 150 N/5 cm
Resistance to nails tearing out	EN 12310-1	XD: > 140 N, MD: > 140 N
s <sub>g</sub> -value	EN 1931	0,01 m
Water-resistance	EN 13111	W2 passed
Fire class	EN 13501-1	E
UV stability and outdoor exposure	3 months	
Temperature-resistance	-40°C to +100°C	
Dimensions	roll width 1,50 m and 3,00 m	roll length 50 m
	roll area 75 m <sup>2</sup> , 150 m <sup>2</sup>	roll weight 7,5 kg, 15 kg

The wall lining membrane pro clima SOLITEX WA is made of a special polypropylene microfibre fleece. The pro clima SOLITEX WA guarantees optimum protection for the structure under the facade against wind and damp. The membrane protects against driving rain during construction. The dark grey colour of the pro clima SOLITEX WA prevents it showing through if there are breaks in the facade material (e.g. door lining).



## SOLITEX UM <sup>connect</sup>

Composition	four-ply combination of PP separation layer, PP microfibre fleece, special TEEE-film and PP microfibre fleece	
Surface weight	EN 1849-2	500 g/m <sup>2</sup>
Tear-resistance	EN 12311-1	XD: 200 N/5 cm, MD: 270 N/5 cm
Resistance to nails tearing out	EN 12310-1	XD: > 130 N, MD: > 130 N
s <sub>g</sub> -value	EN ISO 12572	0,02 m humidity variable
Water-resistance	EN 1928	W1 passed water column > 2500 mm
Fire class	EN 13501-1	E
UV stability and outdoor exposure	3 months	
Temperature-resistance	-40°C to +100°C	
Dimensions	roll width 1,40 m	roll length 25 m
	roll area 35 m <sup>2</sup>	roll weight 17,5 kg

Four-layer roofing underlay with 3D separation layer and butyl self-adhesive strips.

The special TEEE-film gives this underlay exceptional thermal stability and very high resistance to driving rain and makes it resistant to chemicals commonly found in building materials (e.g. wood preservative or chainsaw oil). The 8 mm thick 3D separation layer made of PP fabric underlay protects the roof covering from moisture build-up and provides sound insulation against the noise of rain or hail.

SOLITEX UM connect is suitable for ventilated or unventilated structures in combination with any type of roofing or facade materials such as titanium zinc, aluminium, stainless steel, galvanised steel, copper etc. Spun-bonded membranes increase the safety of the structure and are therefore recommended by leading metal roof manufacturers.

### Laying roof area



The pro clima SOLITEX membranes are extremely stable in form, making them quick, easy and accurate to lay. The overlap on the membranes should be at least 10 cm, a distance which is easy to stick to using the printed markings at 15 cm intervals. A greater overlap is recommended if the roof pitch is less than

the regulation amount. The membranes are attached using rust-resistant wide-headed pins or staples in the top third of the lining area.

### Sarking membranes

Sarking membranes are laid from one rafter to the next. Because of their extremely high resistance to water and to nails tearing out, SOLITEX MENTO, SOLITEX UD and SOLITEX PLUS fulfil all the requirements of a sarking membrane.



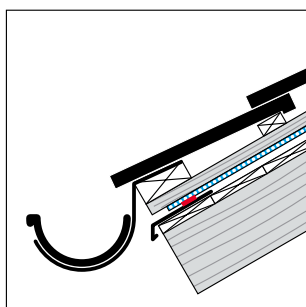
### Roof lining membranes

Roof lining membranes are fitted to a fixed base, e.g. wooden planking. Because of their extremely high resistance to water (water column > 2500 mm), SOLITEX MENTO, SOLITEX UD and SOLITEX PLUS are excellently suited to use as roof lining membranes. The gluing of the roof lining membrane increases the waterproof properties of the roof area.

It can be glued using the double-sided adhesive tape pro clima DUPLEX or the one-sided TESCON VANA.



## Eaves

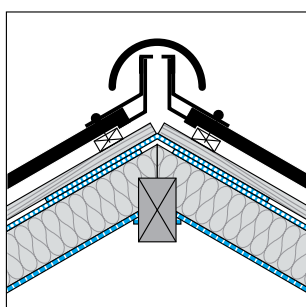


Position the pro clima SOLITEX sarking / roof lining membrane on a drip plate or eaves strips.

Glue the pro clima SOLITEX membrane to the plate using pro clima DUPLEX double-sided adhesive tape.

Leave ventilation gaps for the back ventilation of the roof membrane along the eaves. Ridge and rake ventilation.

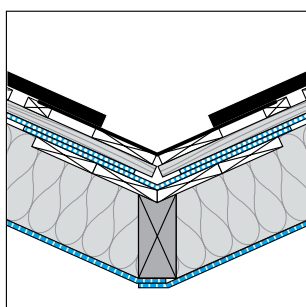
## Ridge and rake



Guide the pro clima SOLITEX sarking / roof lining membrane along the roof ridge or rake (overlap approx. 10 cm).

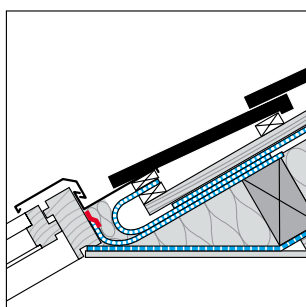
Ventilation openings are not required in any insulation material underneath (e.g. if the roof area is used for residential purposes). For uninhabited pitched roofs, ridge and rake ventilation is recommended.

## Valley



Lay a pro clima SOLITEX film strip longitudinally along the middle of the valley (soaker strip). Attach it using staples or clout nails along the edge of the membrane. Overlap all membranes in this area.

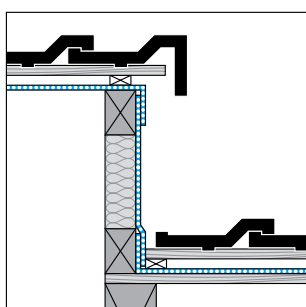
## Penetration of Velux windows, chimneys, pipes and other roof fittings



Fit a film gutter by laying a pro clima SOLITEX membrane underneath the top membrane (before fitting the laths).

Fit a film gutter by laying a pro clima SOLITEX membrane underneath the top membrane (before fitting the laths).

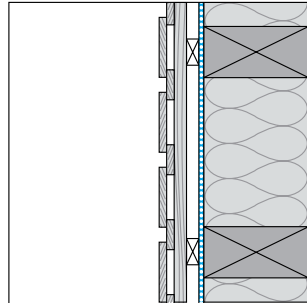
## Dormer windows



Guide the pro clima SOLITEX sarking / roof lining membrane along the side of the dormer cheek.

Cover the protective membrane on the dormer cheek so that it carries water.

### Laying wall area



The extremely high diffusion-permeability of the pro clima SOLITEX WA guarantees direct mounting onto the wall construction in all cases. This effectively prevents the formation of condensation.

The pro clima SOLITEX WA membranes can be glued to one another using the double-sided pro clima DUPLEX adhesive tape or single-sided pro clima RAPID CELL adhesive tape, TESCON No.1, TESCON VANA or the black TESCON INVIS.



The pro clima SOLITEX WA is designed to be used under suspended facades and must not be exposed to outdoor conditions in the long term.

#### Ireland & Northern Ireland

Ecological Building Systems Ltd.  
Main St, Athboy  
Co Meath  
Phone +353 469432104  
Fax +353 469432435  
info@ecologicalbuildingsystems.com  
www.ecologicalbuildingsystems.com

#### UK

Ecological Building Systems UK Ltd  
17 City Business Centre  
Lower Road, London  
SE16 2XB  
Phone 05600 758025  
Fax 05600 758026  
info@ecologicalbuildingsystems.com  
www.ecologicalbuildingsystems.com



MOLL  
bauökologische Produkte GmbH  
D-68723 Schwetzingen, Germany  
www.proclima.com