

Installation instructions

SOLITEX ADHERO® 3000

Protection of floors during the construction period



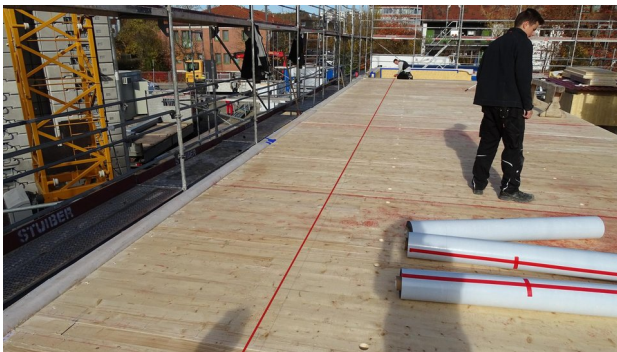
1. Check the subsurface

Clean coarse dirt from the subsurface and remove any protruding elements (e.g. wood splinters or screws) so that the membrane will not be damaged during installation.



2. Remove loose material

Remove any loose material.



3.1 Create marking

Mark the position of the first membrane on the subsurface.



3.2 Create marking

Plan the marking and installation in such a way that there is continuous adhesion with the flat surface.



4. Position the membrane

Place SOLITEX ADHERO 1000/3000 in position at this marking, align it exactly in the longitudinal direction and stick the first 25 cm (10") to the subsurface.



5. Stick the surface

Roll out the membrane along the marking and gradually stick it to the subsurface.



6. Rub the membrane firmly to secure the adhesive bond

Rub the membranes firmly into place – e.g. using a sweeping brush or PRESSFIX XL.



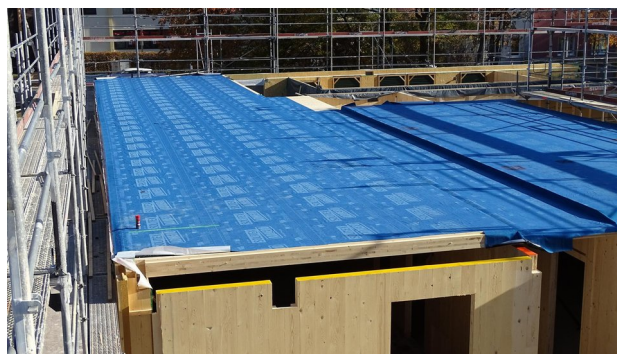
8. Alternative method of sticking membranes to each other

As an alternative method, the membranes can be taped to one another using TESCON VANA. Position the tape centrally and gradually stick it in place with no folds or creases. Rub the tape firmly to secure the adhesive bond.



10. Protection against seepage

A water-resistant adhesive bond is to be created across the entire joint area. Any gaps or defects are to be covered with TESCON VANA in a waterproof manner or, if necessary, filled with ORCON MULTIBOND, for example.



7. Install the remaining membranes

Stick the next membrane onto the previous membrane with 15 cm (6") of an overlap. Rub the membrane overlap with PRESSFIX XL.



9. Joints to concrete walls

Joints are to be sealed using the system adhesive tape, which is to cover at least 50 mm (2") of the membrane. Sealed joints with vertical building structures should cover a height of approx. 10 cm (4") (upper edge of subsequent covering layer of component). Areas to be sealed are to be checked beforehand and, if necessary, pre-treated using TESCON SPRIMER or TESCON SPRIMER, for example.



11. Drainage of surface

If the unhindered run-off of rainwater is not possible due to protruding walls or other building features, it is to be ensured that drainage of all surfaces created can take place by means of floor drainage or suction. Avoid standing water on the membranes.



12. Installation of ADHERO Floor Drain

Insert the ADHERO Floor Drain into the drillhole and, if necessary, secure with countersunk screws.



13. Seal ADHERO Floor Drain

ADHERO Floor Drain is used to drain water from surfaces and should be sealed using the TESCON VANA system adhesive tape with no folds or creases. The system adhesive tape should cover approx. 30 to 50 mm (1 1/4" to 2") of both the membrane and the ADHERO Floor Drain. Any water that is collected is to be drained from the building.



14. Penetrations

Penetrations are to be sealed using TESCON VANA in a manner that prevents seepage.



15. Working carefully

The purpose of this membrane should be explained to all parties involved in the construction project and these parties should be instructed to exercise the necessary care and to use the necessary protection (e.g. protective boards, protective mats). The membranes are intended for single use in accordance with the product data sheet. Small repairs can be carried out using the TESCON VANA adhesive tape. In the case of large-scale or mechanical damage, the membrane should be replaced.



16. Controlled drying out

To speed up drying out of any building structures or membranes that may have become damp, controlled drying of the construction area is recommended (accompanied by heating of the construction area, if necessary).

17. Disposal recommendations

The membranes are non-hazardous waste. Dispose of them in accordance with the locally applicable regulations. Please consult the safety data sheet.

Airtightness and weather protection for walls



1. Check the subsurface

Apply TESCON PRIMER RP or TESCON SPRIMER to subsurfaces that have insufficient stability. Adhesion tests are recommended in certain cases.

In the case of wood-fibre insulation panels on the outside: it is recommended to apply primer to the edge areas as a minimum, particularly in exposed locations and depending on the surface finish.



2. Mark the position

Decide on the position of the first membrane and mark this on the wall. Determine the membrane length.



3. Seal the corners (with corner strip)

For interior corners and – if necessary – for exterior corners too, cut a strip of SOLITEX ADHERO that is at least 40 cm (16") in width and stick it in place with equal parts on each of the walls. Alternatively, tape can also be applied over the corners (see Item 8).



4. Cut the membranes

Cut the membranes down to the required length. There are markings to make your work easier.



5. Roll out the cut pieces

Roll out the cut strips in such a way that the release film faces outward.



6. Remove the release film

The release film is split into two parts that are 25 cm and 125 cm (10" and 49") wide. The 25 cm-wide application zone is stuck in place first in the description that follows. To ensure that the wider release film can be removed more easily later on, pull off a corner of this film and fold it over. This will then be easier to grip later on.



7. Apply the membrane (with corner strip)

Remove approx. 20-30 cm (8"-12") of the release film of the upper application zone. Position the membrane at the marking (on the wall) and attach to the wall using the released part of the application zone. Ensure that the membrane covers at least 15 cm (6") of the corner strip.



9. Stick the application zone

Continue rolling out the first membrane. Align it continuously with the marking. Gradually remove the release film of the application zone and stick in place. Rub using the PRESSFIX XL application tool to secure.



11. Stick to the subsurface

Rub the tape firmly into place using PRESSFIX XL and stick the tape to the subsurface, avoiding air bubbles and folds.



8. Apply the membrane (without corner strip)

Remove approx. 20-30 cm (8"-12") of the release film of the upper application zone. Position the membrane at the marking (on the wall) and attach to the wall using the released part of the application zone. To form the corner, ensure at least 15 cm (6") of membrane continues around the corner. Work SOLITEX ADHERO into place using PRESSFIX XL and avoid hollows.



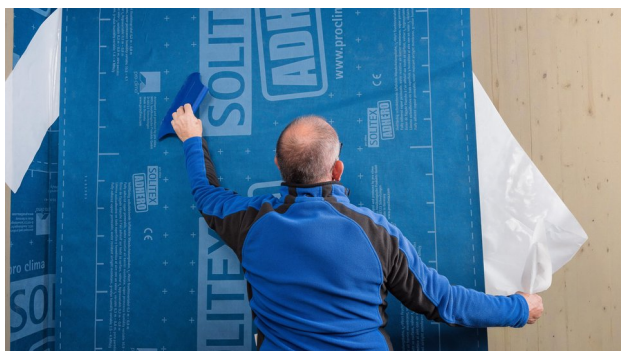
10. Remove the remainder of the release film

Grip the wide release film by the previously folded corner and pull it off.



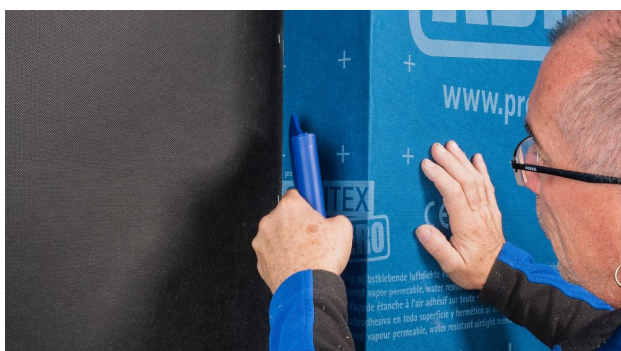
12. Install the remaining membranes

Apply all the remaining membranes - one by one - horizontally in an overlapping, waterproof manner. The procedure is as described above. The minimum overlap for membranes is 10-15 cm (4"-6"). Rub the membranes firmly into place using PRESSFIX XL, avoiding air bubbles and folds.



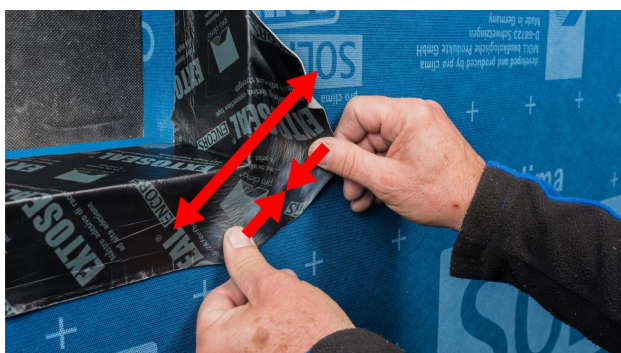
13. Alternative: Vertical installation

Attach SOLITEX ADHERO at the highest point. Gradually remove the release film strips by pulling them downward. Rub the membrane firmly into place using PRESSFIX XL, avoiding air bubbles and folds.



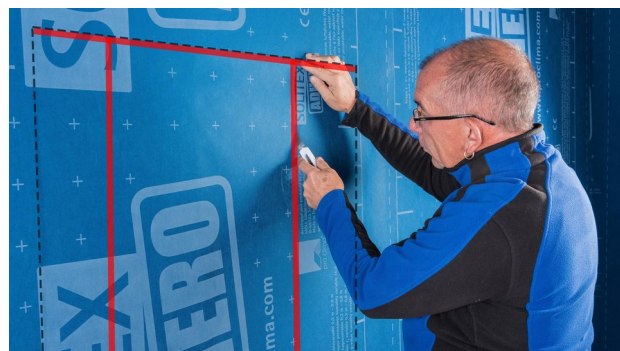
15. Stick the membrane into the reveal

Once SOLITEX ADHERO 1000/3000 has been cut out, fold it onto the reveal and stick it in place. Rub the membrane firmly into place using PRESSFIX XL, avoiding air bubbles and folds.



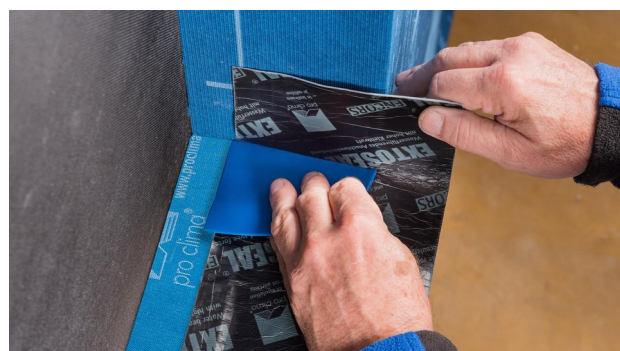
17. Stick the corners

Fold EXTONSEAL ENCORS onto the front side and stick it to SOLITEX ADHERO. Stretch the sub-sill sufficiently at the corners and then stick it in place in a manner free of tension. Rub the tape firmly using the PRESSFIX application tool to secure the adhesive bond.



14. Cut out window openings

The membrane is first applied over any window openings. To cut out the opening, cut the membranes as indicated with the red line using a cutter.



16. Form the sub-sill

To form the sub-sill, stick EXTONSEAL ENCORS to the wall below the window – onto an insulation wedge, for example – to ensure that water is guided to the outside. Have the tape protrude by at least 4 cm (1.6") at the face of the wall and stick at least 15 cm (6") of this tape onto the reveals. Avoid hollows by using PRESSFIX.



18. Seal window joints on the inside and outside

Apply window-sealing tapes (e.g. CONTEGA SOLIDO SL on the inside and CONTEGA SOLIDO EXO on the outside) to the window frame all around the window. Place the window into the opening, fasten it and then stick the tapes to the reveal all around the window. The pro clima WINDOW BOX brochures provide detailed installation recommendations.



18.1 Alternative: Sealing to flanged windows (USA)

Insert the window, fasten it and the seal with TESCO VANA on SOLITEX ADHERO all around the window in a waterproof manner. Rub the tape firmly using the PRESSFIX application tool to secure the adhesive bond.



20. Repair of defects

Stick TESCO VANA in widths of 15 or 20 cm (6" or 8") over any defects in the membrane. Rub over the taped surface using PRESSFIX XL.



22. Pipe feed-throughs with ROFLEX

Seal pipe feed-throughs with a suitable ROFLEX grommet. Stick the grommet to the subsurface using TESCO VANA. Rub over the taped surface using PRESSFIX XL.



19. Sealing to rough substrances

When sealing to rough substrances such as concrete building elements, apply a line of the ORCON F adhesive sealant that has a thickness of at least $d = 5 \text{ mm}$ ($1/4"$); it may be necessary to use more on very rough substrances: Apply the membrane strip to the adhesive bed, leaving slack to allow for expansion. Do not press the adhesive completely flat.



21. Alternative with SOLITEX ADHERO

As an alternative, defects can also be repaired by sticking a piece of SOLITEX ADHERO onto them. Rub over the taped surface using PRESSFIX XL.



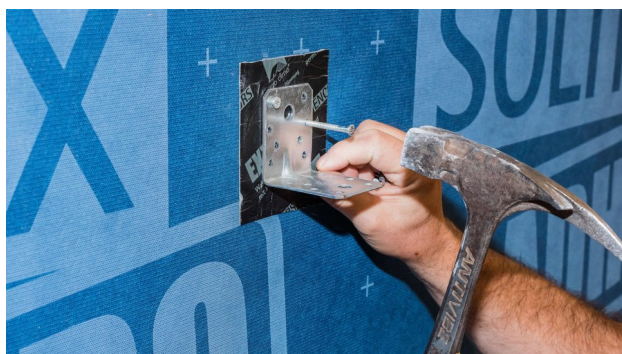
23. Alternative with TESCO VANA

Alternatively, the pipe feed-through can be sealed in an interlocking pattern from top to bottom in a waterproof manner using TESCO VANA.



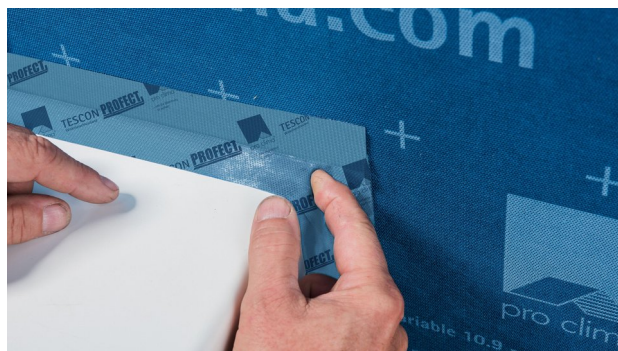
24. Cable feed-throughs with KAFLEX

Place a KAFLEX sealing grommet over the cable and stick it to the membrane. Rub the tape firmly using the PRESSFIX application tool to secure the adhesive bond.



26. Sealing nail perforations

If brackets or similar parts are to be attached to the wall, use EXTOSSEAL ENCORS for nail-sealing.



25. Angular penetrations

Seal angular penetrations using TESCON PROTECT. Rub the tape firmly using the PRESSFIX application tool to secure the adhesive bond.

Substrates

Temporary protection for floors during construction

Clean subsurfaces before applying the membranes – remove any protruding elements. Adhesion is not possible on frozen surfaces. There must be no water-repellent substances (e.g. grease or silicone) on surfaces where adhesives are to be applied. Subsurfaces must be sufficiently dry and stable.

It is your responsibility to check the suitability of the subsurface; adhesion tests may be necessary in certain cases.

Pitched roofs and walls

Clean subsurfaces before applying the membranes. Adhesion is not possible on frozen surfaces. There must be no water-repellent substances (e.g. grease or silicone) on surfaces where adhesives are to be applied. Subsurfaces must be sufficiently dry and stable.

Sealing and joints are possible with planed and painted wood, hard plastics and metal (e.g. pipes, windows etc.), hard wood-based panels (chipboard, OSB, plywood, MDF and wood-fibre underlay panels) and mineral substrates such as concrete, unplastered masonry or plaster. Concrete or plaster substrates must not be sandy or crumbling.

It is your responsibility to check the suitability of the subsurface; adhesion tests may be necessary in certain cases. Pre-treatment with TESCON PRIMER is required in the case of adhesion to wood-fibre underlay panels or substrates that have insufficient stability.

General conditions

Temporary protection for floors during construction

SOLITEX ADHERO 3000 is to be installed with the printed side facing the installation technician; it can be installed on stable board substrates (e.g. CLT, OSB, chipboard and plywood sheets). Recesses in the substrate – such as slots, grooves etc. – can lead to increased seepage underneath SOLITEX ADHERO membranes and should be avoided, if possible. To achieve waterproof installation, membranes must be installed with no folds or creases. When installing the membranes, rub them firmly to secure the adhesive bond using a sweeping brush or the PRESSFIX XL tool, for example.

If SOLITEX ADHERO 3000 is to be applied to floor/ceiling elements during the pre-fabrication stage, TESCON VANA must be used to tape the element/membrane joints. Select the tape width so that a width of at least 5 cm (2") is covered by the tape on both of the elements. Ensure that a width of at least 5 cm (2") of TESCON VANA covers SOLITEX ADHERO 3000 at joints too. Continue the sealed transition to a height of approx. 10-15 cm (4" - 6") at adjacent vertical elements.

SOLITEX ADHERO 3000 can provide temporary weathering-protection for intermediate floors on multi-storey CLT (cross-laminated timber) or wooden-frame buildings during construction for a period of up to 4 weeks.

Water must be drained from the surface of the building structure, e.g. using ADHERO Floor Drain. A short-term build-up depth (max. 24 hours) of 30 mm (1¼") should not be exceeded.

Bitumen membranes can be welded onto this membrane; the applicable regulations are to be observed.

Pitched roofs and walls

SOLITEX ADHERO 3000 is to be installed with the printed side facing the installation technician; it can be installed on stable subsurfaces (e.g. OSB, chipboard, MDF, plywood sheets, wood-fibre underlay panels, layers of plaster (e.g. gypsum, lime, lime cement, masonry, concrete etc.). The membranes can be installed on walls either vertically or horizontally in an overlapping, waterproof manner. If significant rain loads are expected (e.g. in roof areas or on walls with high loads of driving rain), horizontal waterproof installation is recommended.

To achieve airtight installation, membranes must be installed with no folds or creases. When installing the membranes, rub them firmly to secure the adhesive bond using the PRESSFIX XL tool.

This product can also be used as a temporary covering for up to 4 months to protect inclined roofs with a roof pitch of greater than 14° (3:12) in accordance with the regulations of the Central Association of the German Roofing Trade (ZVDH). In addition, system products such as the TESCON NAIDECK nail-sealing tape and the KAFLEX / ROFLEX pipe and cable grommets are to be used. The specifications of the applicable national regulations are to be taken into account when carrying out installation and adhesion.

The information provided here is based on practical experience and the current state of knowledge. We reserve the right to make changes to the recommended designs and processing or to make alterations due to technical developments and associated improvements in the quality of our products. We would be happy to inform you of the current technical state of the art at the time you use our products.

Further information about installation and design details is available in the pro clima planning documentation. If you have any questions, please contact [pro clima Technical Support](<https://proclima.com/service/technical-support>).

MOLL

bauökologische Produkte GmbH

Rheintalstraße 35 - 43

D-68723 Schwetzingen

Fon: +49 (0) 62 02 - 27 82.0

eMail: info@proclima.de

For over 20 years, Ecological Building Systems has been at the forefront of environmental and sustainable building products supplying a range of innovative airtightness solutions and natural insulations backed up with expert technical support.

As product suppliers in the UK and Ireland, we're happy to assist you with your projects and have expert technical and sales advice on hand.



Call us

Great Britain +44 (0)1228 711511

Ireland +353 46 9432104



Email us

info@ecologicalbuildingsystems.com



Find us

Great Britain Ecological Building Systems UK Ltd.,
Cardewlees, Carlisle, Cumbria, CA5 6LF,
United Kingdom

Ireland Ecological Building Systems Ltd.,
Main Street, Athboy. Co. Meath, C15 Y678,
Republic of Ireland