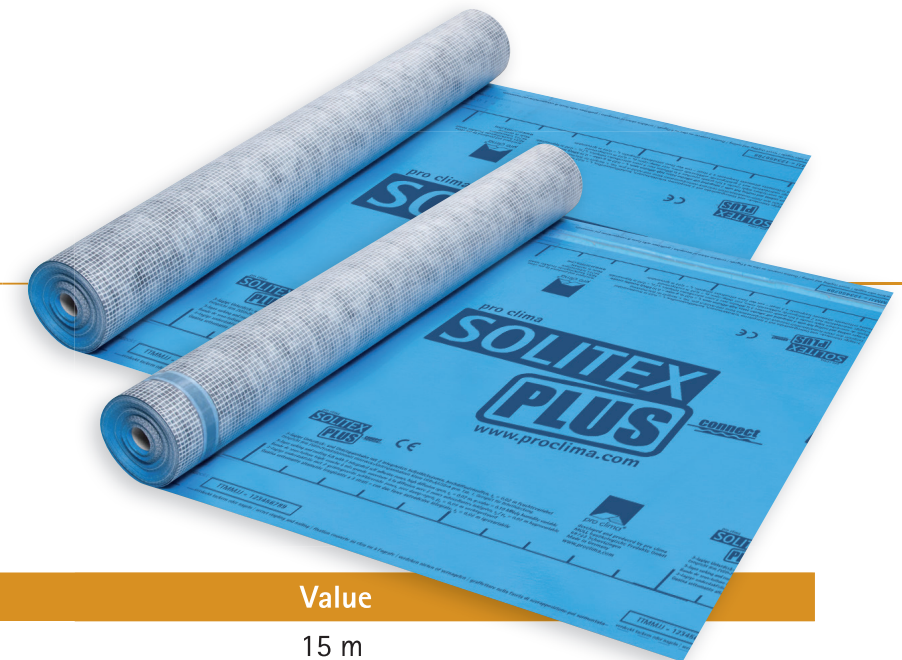


SOLITEX[®] PLUS

Reinforced roofing underlay for pitched roofs
and suspended timber floors

- ✓ High performance underslating felt
- ✓ High nail tear resistance, 270 N
- ✓ Temperature resistant
- ✓ Resistance to wood preservatives
- ✓ High resistance to pelting rain
- ✓ NSAI AGRÉMENT Board approved
- ✓ BBA approved
- ✓ High diffusion ability
s_d value 0.04 m or
g value 0.20 MN·s/g
- ✓ Air impermeable, windtight



Technical data:

Attribute	Norm	Value
Length		15 m
Width		1.5 m
Surface weight	BS EN 1849-2	170 g/m ²
Thickness	BS EN 1849-2	0.55 ±0.10 mm
Water vapour resistance factor μ	BS EN ISO 12572	73
s _d value	BS EN ISO 12572	0.04 m
g value		0.20 MN·s/g
Fire behaviour	BS EN 13501-1	E
Exposure time		3 months
Water column	BS EN ISO 811	> 2500 mm
Watertightness, non-aged/aged*	BS EN 13859-1	W1 / W1
Tensile strength MD/CD	BS EN 13859-1 (A)	495 N/5 cm / 310 N/5 cm
Tensile strength MD/CD aged*	BS EN 13859-1 (A)	495 N/5 cm / 350 N/5 cm
Elongation MD/CD	BS EN 13859-1 (A)	25% / 20%
Elongation MD/CD aged*	BS EN 13859-1 (A)	15% / 15%
Nail tear resistance MD/CD	BS EN 13859-1 (B)	270 N / 270 N
*) Durability after artificial ageing	BS EN 1297/ BS EN 1296	passed
Flexibility at low temperature	BS EN 1109	-40 °C/-40 °F
Temperature resistance		-40 °C to +100 °C / -40 °F to +212 °F



For further technical information,
please contact:
Ecological Building Systems
Main Street, Athboy
County Meath
Republic of Ireland

☎ +353 46 9432104
☎ +353 46 9432435
www.ecologicalbuildingsystems.com
info@ecologicalbuildingsystems.com

For stockists, please contact:
Ireland ☎ +353 46 9432104
☎ +353 46 9432435
UK ☎ +44 1228 711 511
☎ +44 1228 712 280

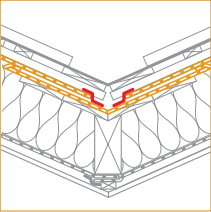
proclima.com

... and the insulation
is perfect



To achieve maximum performance using pro clima SOLITEX® PLUS breathable membrane the following fitting instructions are recommended

Valley



Lay a SOLITEX PLUS strip longitudinally along the middle of the valley (soaker strip). Fold back the membranes by approx. 5 cm on their long sides and attach using staples sparingly. Stick the membranes placed over the valley membrane using TESCON VANA.

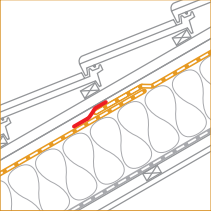


Laying roof area



The SOLITEX PLUS membrane is extremely stable in form, making it quick, easy and accurate to lay. The overlap on the membranes should be at least 10 cm. The marking that is printed onto the membrane will serve as a guide here. A greater overlap is recommended if the roof pitch is less than the regulation amount. The membrane is attached using rust-resistant wide-headed pins or staples in the top third of the lining area.

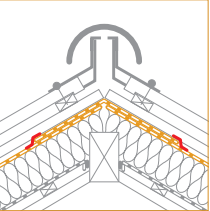
Taping the membrane overlaps



Install the membranes with 10–15 cm overlap. The membranes should be fastened in a manner that is protected against moisture in the upper third of the overlap area of the membrane that will later be the overlay and underneath the counter batten. Use galvanised staples (min. 10 mm wide and 8 mm long). Fasteners should not be applied in areas where water run-off is collected (e.g. in roof valleys).

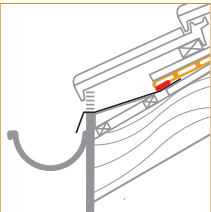


Ridge and rake



In the case of fully insulated rafters, place SOLITEX PLUS over the ridge/hip and attach in place using staples in the area of the counter batten. Overlap relative to the membrane underneath by at least 22.5 cm. Tape the membrane overlap using TESCON No.1 / TESCON VANA or pro clima DUPLEX double-sided adhesive tape. Ridge ventilation should be provided in the case of cold attics where insulation is applied at joist level. To do so, install SOLITEX PLUS in such a way that it stops 5 cm before the ridge. In addition, permanent ventilation fittings should be provided in the unconverted attic. Please refer to BS 5250 for further ventilation guidelines for various roof types.

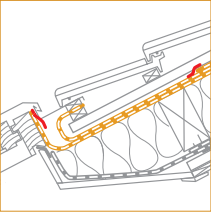
Eaves



pro clima SOLITEX PLUS must be stuck at the eaves in a waterproof manner. Position the membrane on a UV stable eave flashing or eave strip. Stick in place using the double-sided pro clima DUPLEX adhesive tape or the single-sided TESCON No.1 / TESCON VANA adhesive tape, ensuring that there are no folds or creases.



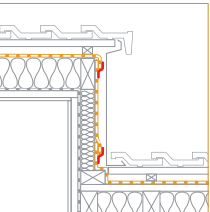
Penetration of roof windows, chimneys, pipes and other roof fittings



Installation of a gutter above/adjacent to the roof window is recommended by fitting a second SOLITEX PLUS membrane as an underlay. This must be guided into the overlap area of the next continuous roofing membrane above the integrated roof element. Create the gutter in such a way that moisture is guided by a continuous counter batten into the next adjacent field that does not have an integrated roof element.



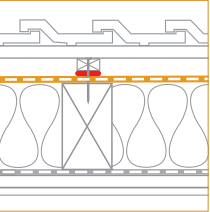
Dormer windows



Allow around 15 cm of SOLITEX PLUS to run up onto the dormer cheek and attach it at the upper membrane edge using staples. SOLITEX PLUS can also be used in the area of dormer cheeks to provide protection against outdoor exposure during the construction phase.



Nail-sealing



TESCON NAIDECK nail-sealing tape prevents water entering through nail, staple or screw holes during the construction phase, for example. Stick the tape to the back of the counter battens before attaching them. After putting the counter batten in place on the rafters, remove the backing paper and gradually affix the batten using nails, for example. This is essential on low pitch or very exposed roofs.



Fitting instructions to comply with Installation Guidelines

General

- The pro clima SOLITEX PLUS system can be used as an underlay or sarking membrane. It stops cold air from flowing through the building structure and ensures that the thermal insulation performs to its optimum efficiency (see diagrams A & B).
- SOLITEX PLUS underlays are not affected when used with undried timber preservatives (water or solvent based).
- SOLITEX PLUS underlays can be used as a temporary water resistant roof covering for not more than 3 months prior to the installation of slates or tiles.
- SOLITEX PLUS should be stored in dry conditions, protected from the weather.
- Please refer to relevant national standards such as the NSAI Irish Code of Practice for Slating and Tiling for additional good practice guidance.
- Counter battens are recommended and considered best practice for optimum performance of vapour permeable roof underlays. A counter batten provides a clear zone for moisture to drain from the roof, especially at the building phase. It also provides a clear ventilation zone between the roof covering and the membrane, allowing vapour to safely disperse and also to reduce overheating between the roof covering and membrane.
- When used unsupported without counter-battens, a nominal 10mm drape must be provided between supports to allow a clear drainage path for moisture and prevent excessive deflection under wind loads. (see diagram C).

Installation instructions

- pro clima SOLITEX PLUS is installed with the blue covering fleece side (with writing) facing outwards. Provided the roof is counter battened, SOLITEX PLUS may be installed taut parallel or perpendicular to the eave. Horizontal installation (perpendicular to the eave) is preferable with regard to water flow paths during the construction phase. When it is used as a sarking membrane, the rafter spacing is limited to 100 cm. Use clout nails or fastening staples that are at least 10 mm wide and 8 mm long to attach the membranes. **The membranes can only be fastened with staples in the protected overlap area.** The maximum distance between fasteners is 10 to 15 cm. Provide membrane overlaps of at least 10 cm in the case of roof pitches greater than 35°. Provide overlaps as per the following table for lower roof pitches.
- SOLITEX PLUS should be overlapped with a minimum of 100 mm (an overlap line is clearly marked on each roll). Overlaps of the membrane should be in accordance with BS 5534:2014 Annex A, Figure A.2, with horizontal laps secured by battens.
- Fix the underlay using good quality extra large clout head nails, galvanised or copper.
- SOLITEX PLUS can be easily cut with a sharp knife and remains flexible at all normal working temperatures.

Roof pitch	Horizontal lap slope	Vertical lap slope
12.5° - 14.0°	225 mm	100 mm minimum
15.0° - 34.0°	150 mm	100 mm minimum
35.0° and over	100 mm	100 mm minimum

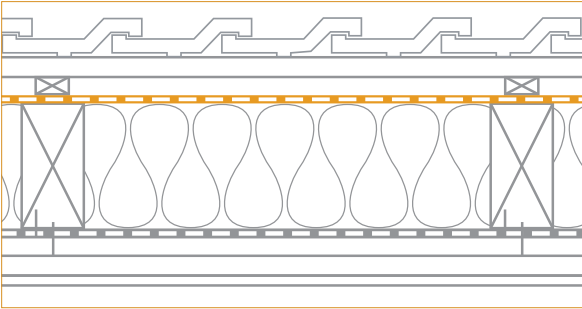


Diagram A

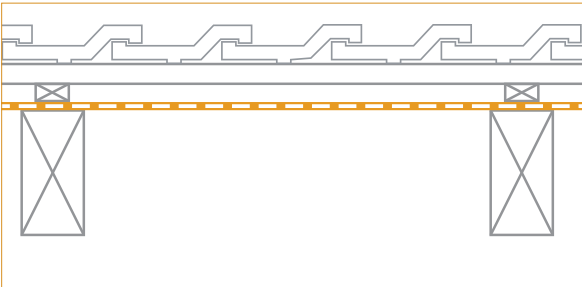


Diagram B

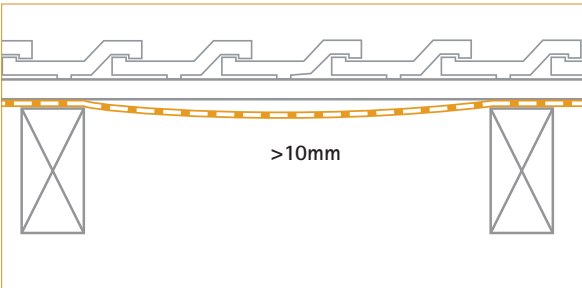


Diagram C

System core components



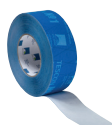
SOLITEX PLUS (connect)
Reinforced roofing underlay for pitched roofs and suspended timber floors



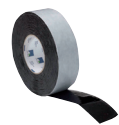
ORCON F
For bonding to adjacent components



TESCON VANA
For taping membrane overlaps



TESCON No.1
Flexible multi-purpose adhesive tape for airtight bonds



TESCON NAIDECK
Double-sided nail-sealing tape

Additional products for detail features



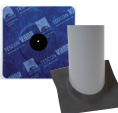
TESCON PROFIL
For joints at windows, doors and corners



DUPLEX
Double-sided adhesive tape for sticking membrane end joints and other joints



TESCON PRIMER RP
For quick and easy application of primer



KAFLEX / ROFLEX
Seal grommets for cable and pipe feed-throughs



ROFLEX exto
Vent pipe grommet for windproof adhesion to pipes under vent tiles



TESCON INCAV
Self-adhesive 3D shaped element for interior corners

For further technical information, please contact:
Ecological Building Systems
Main Street, Athboy
County Meath
Republic of Ireland

+353 46 9432104
+353 46 9432435
www.ecologicalbuildingsystems.com
info@ecologicalbuildingsystems.com

For stockists, please contact:
Ireland +353 46 9432104
+353 46 9432435
UK +44 1228 711 511
+44 1228 712 280

proclima.com

... and the insulation is perfect



For over 20 years, Ecological Building Systems has been at the forefront of environmental and sustainable building products supplying a range of innovative airtightness solutions and natural insulations backed up with expert technical support.

As product suppliers in the UK and Ireland, we're happy to assist you with your projects and have expert technical and sales advice on hand.



Call us

Great Britain +44 (0)1228 711511

Ireland +353 46 9432104



Email us

info@ecologicalbuildingsystems.com



Find us

Great Britain Ecological Building Systems UK Ltd,
Cardewlees, Carlisle, Cumbria, CA5 6LF, United Kingdom

Ireland Ecological Building Systems Ltd.,
Main Street, Athboy. Co. Meath, C15 Y678, Republic of Ireland