

Wellhöfer product programme overview



Always a match!
All Wellhöfer products are available
in standard sizes and custom-made.

wellhöfer
TREPPEN AUS WÜRZBURG
Made in Germany

Attic stairs types



GutHolz - Always the right choice

Reliable 3-section wooden attic stairs

- Overload method tested for 150 kg loading
- 9 cm deep, corrugated hardwood steps
- Solid wood stringers and hardwood treads in stable dovetail joint



AluDrei - For highest resilience

Stable and lightweight 3-section aluminium attic stairs

- Overload method tested for 200 kg loading
- 11 cm deep, corrugated aluminium steps
- Stringers made of aluminium profile with rounded edges



StahlBlau - For special requirements

Robust 3-section steel attic stairs

- Overload method tested for 150 kg loading
- 11 cm deep steps with non-slip mats
- Wear- and corrosion-resistant surface



Liliput - Comfort within little space

High-quality aluminium concertina attic stairs

- Overload method tested for 150 kg loading
- 11 cm deep, corrugated aluminium steps
- Elegant design with aluminium profiles

Advantages as standard with Wellhöfer attic stairs



- **Tested low-emission product**
Significantly below the limit values of the Sentinel Haus Institute
- **Certified climate neutral product**
Currently unavoidable emissions compensated by climate protection certificates
- **Suitable for all roof constructions**
From ventilated to cold roof
- **With thermal protection WS3D**
Tested insulation U-value 0.80, air-tightness Class 4, climate stability Class 3
- **Stair width up to 40 cm**
- **15 years manufacturer's guarantee on function**

Installation box

Wellhöfer attic stairs are always supplied with the complete installation material including the tested ceiling connection system.

Additional features

User safety and building regulations



Guardrail

Required by the building regulations - even in owner-occupied homes. The Wellhöfer guardrail is **stability-tested**.

Handrail

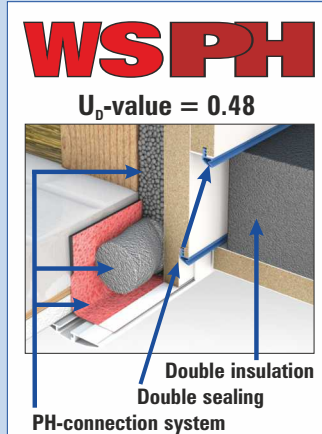
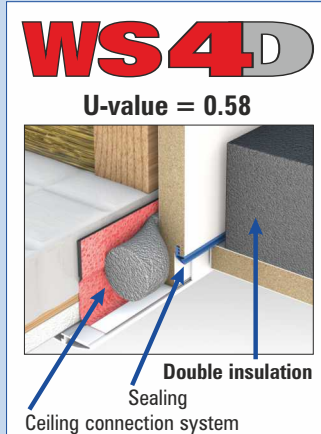
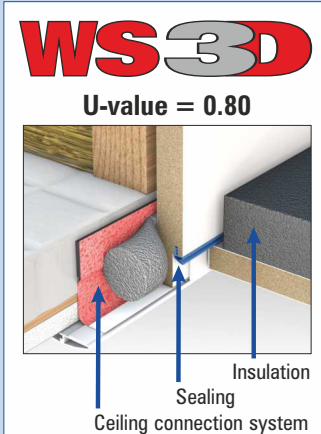
Wooden handrail for 3-section attic stairs
GutHolz/AluDrei/StahlBlau.
Aluminium telescopic handrail for concertina attic stairs Liliput.

Energy conservation: 4-way tested thermal protection WS for attic stairs Make your choice:

Very good as standard:

Better:

Best: Passive House Component



All variants provide:

- Airtight as windows: Class 4
- Ceiling connection system 10x tighter than required
- Climate stability: Class 3

Fire resistant ceilings: Wellhöfer attic stairs with fire protection FS

Fire resistance 30 minutes from below
FS30 DIN 4102-2, EI,30 (ÖNORM B 3860)

Fire resistance 30 minutes from top and bottom
FS30 2S DIN 4102-2

Fire resistance 90 minutes from top and bottom
FS90 2S DIN 4102-2

Tested ceiling connection system

- Always included
- Provides fire protection for the installation gap
- Easy to install

StirnBrett



Alu concertina loft ladder with backboard

- 11 cm deep, corrugated steps
 - Stair width 40 cm
 - For ceiling openings from 80 x 60 cm
- Suitable for replacing an old loft ladder, refitting an existing attic hatch or under skylight windows.

FLACHDACH AUSSTIEG



Flat roof exit

- Easy installation without crane
- Integrated rear ventilation
- One-hand operation

Always in combination with attic stairs. Suitable for all Wellhöfer attic stairs.



Gain storage room. Get access. Hide installations.

Wall hatch doors give access to knee-storey behind the jamb wall.

- Many possibilities of applications
- Different types can be combined
- For wall openings from 30 x 30 cm to 120 x 200 cm (width x height)
- Adjustable clip-on hinges

For energy conservation also available with thermal protection WS 3D/4D and Blower-Door-version.

For the installation in walls with fire resistance a wall hatch with fire protection FS30 2S (30 minutes from both sides) is available.

Numerous types for a wide range of applications:



Double-wing door

Door-leaf divided vertically in the middle and fitted with a stop bar.



Wall-flush

A thicker door leaf and mitred plastering profiles allow the flush installation with the wall for the perfect look.



3-sided

The frame, which is open at the bottom, enables a level passage without threshold.

Figure shows left hand door.



PushLock-closure

The retractable knob locks the wall hatch airtight. When the button is pressed it jumps out and serves as a handle.



Cabinet

Dust-protected storage space, from key cabinet to built-in cupboard or as bathroom module.



5-cornered

The angled design allows side access to the knee storey or can fit under stairways.

DeckenTüre



Access hatches

The professional solution for smallest openings

- For ceiling openings from 30 x 30 cm to 75 x 70 cm (length x width)
- Maximum clearance due to detachable door
- With thermal protection WS 3D/4D suitable for Blower-Door-test

Wellhöfer Treppen GmbH & Co.KG
Max-Mengeringhausen-Straße 1
97084 Würzburg, Germany

info@wellhoefer.de
Tel. +49 (0)9 31 / 6 14 05-0
Fax +49 (0)9 31 / 6 14 05 71



wellhöfer
TREPPEN AUS WÜRZBURG
www.wellhoefer.de

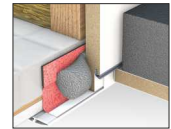


Wellhöfer advantages

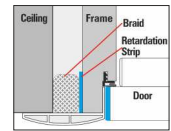
- 15 years functional guarantee
- Low-emission tested, BREEAM-certified, climate neutral
- Lots of flexibility through custom-made products
- Standard height 25 cm, custom-made for any ceiling thickness 17 - 90 cm
- Attic stairs GutHolz
High-quality beech steps: 9 cm deep, 36 cm wide, stair width 40 cm. Pine stringers knot-free. Dovetail joint. 2-component feet covers as standard.
- Attic stairs AluDrei
Aluminium. Tested for 200 kg loading. 11 cm deep steps.
- Concertina attic stairs Liliput
Aluminium. 11 cm deep steps. Floor-to-ceiling height max. 410 cm.
- Very good component-tested U values in certified test institute with test certificate
- Ceiling connection system as standard always included (also with fire protection products)
- Cover profiles as standard always included
- Guardrail according to regulations, stability-tested



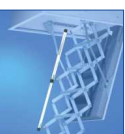
Energy conservation



Fire protection

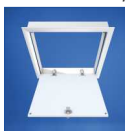


User safety



More products

Flat roof exits, access hatches, wall hatches



Gutfühlen mit Wellhöfer

Wellhöfer Treppen GmbH & Co.KG
Max-Mengeringhausen-Straße 1
97084 Würzburg, Germany

Tel. +49 (0)9 31 / 6 14 05-0
Fax +49 (0)9 31 / 6 14 05 71

www.wellhoefer.de
info@wellhoefer.de

wellhöfer
TREPPEN AUS WÜRZBURG
Made in Germany

For over 20 years, Ecological Building Systems has been at the forefront of environmental and sustainable building products supplying a range of innovative airtightness solutions and natural insulations backed up with expert technical support.

As product suppliers in the UK and Ireland, we're happy to assist you with your projects and have expert technical and sales advice on hand.



Call us

Great Britain +44 (0)1228 711511

Ireland +353 46 9432104



Email us

info@ecologicalbuildingsystems.com



Find us

Great Britain Ecological Building Systems UK Ltd.,
Cardewlees, Carlisle, Cumbria, CA5 6LF,
United Kingdom

Ireland Ecological Building Systems Ltd.,
Main Street, Athboy. Co. Meath, C15 Y678,
Republic of Ireland

For over 20 years, Ecological Building Systems has been at the forefront of environmental and sustainable building products supplying a range of innovative airtightness solutions and natural insulations backed up with expert technical support.

As product suppliers in the UK and Ireland, we're happy to assist you with your projects and have expert technical and sales advice on hand.



Call us

Great Britain +44 (0)1228 711511

Ireland +353 46 9432104



Email us

info@ecologicalbuildingsystems.com



Find us

Great Britain Ecological Building Systems UK Ltd.,
Cardewlees, Carlisle, Cumbria, CA5 6LF,
United Kingdom

Ireland Ecological Building Systems Ltd.,
Main Street, Athboy. Co. Meath, C15 Y678,
Republic of Ireland