

# Installation Guide Handrail Telescope for Liliput



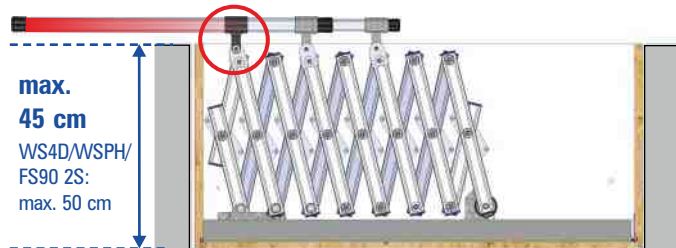
**Observe mounting direction!**

**Alignment of handrail depends on ceiling opening length, ceiling thickness / casing height and additional equipment!**

**Standard installation direction:**

Handrail with **thick end upwards**

(Black handrail support on the uppermost bolt)



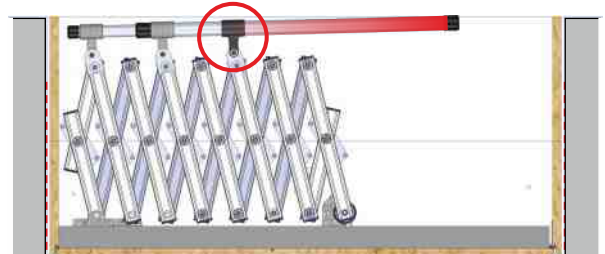
**Mount handrail on all supports of the concertina stairs:**

Position handrail and insert bolts. Fix the bolts on the back by sliding on the safety clips.



Short bolts for metal supports.  
Long bolt for black handrail support!

For **higher ceiling thickness / casing height / flat roof exit**: Reverse installation direction.



Handrail with **thick end downwards**

(Black handrail support on the lowest bolt)

**Minimum ceiling opening length required:**

**min. 113 cm**

WSPH: min. 120 cm

FS90 2S: min. 117 cm

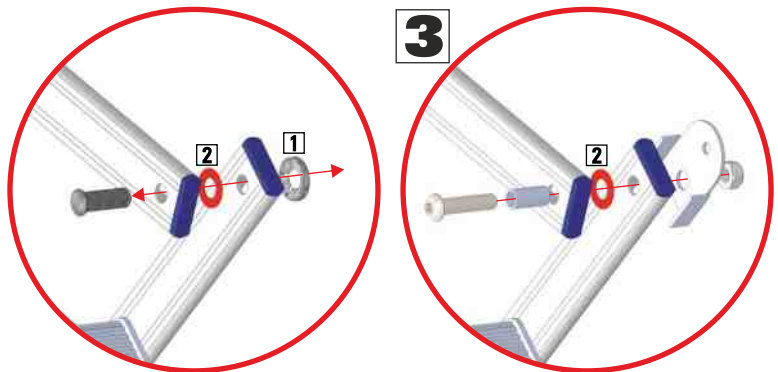
## For retrofitting: Place handrail supports

The handrail can be used on **both sides** (right or left).

**Place supports on the bolts 1 / 3 / 5** (see above).

For floor-to-ceiling heights  $\geq 374$  cm, attach to bolts 2 / 4 / 6.

- 1** Remove the retaining ring with pincers.  
(Retaining rings are broken after removal)
- 2** Pull out the bolt and push in the sleeve.  
**Important:** Thin washer between stringers must remain there.
- 3** Push on the handrail supports.  
Fasten with enclosed M8 bolts and lock nuts.
- 4** Fix handrail inside the supports.  
(see above)



---

For over 20 years, Ecological Building Systems has been at the forefront of environmental and sustainable building products supplying a range of innovative airtightness solutions and natural insulations backed up with expert technical support.

**As product suppliers in the UK and Ireland, we're happy to assist you with your projects and have expert technical and sales advice on hand.**



**Call us**

**Great Britain** +44 (0)1228 711511

**Ireland** +353 46 9432104



**Email us**

[info@ecologicalbuildingsystems.com](mailto:info@ecologicalbuildingsystems.com)



**Find us**

**Great Britain** Ecological Building Systems UK Ltd.,  
Cardewlees, Carlisle, Cumbria, CA5 6LF,  
United Kingdom

**Ireland** Ecological Building Systems Ltd.,  
Main Street, Athboy. Co. Meath, C15 Y678,  
Republic of Ireland