

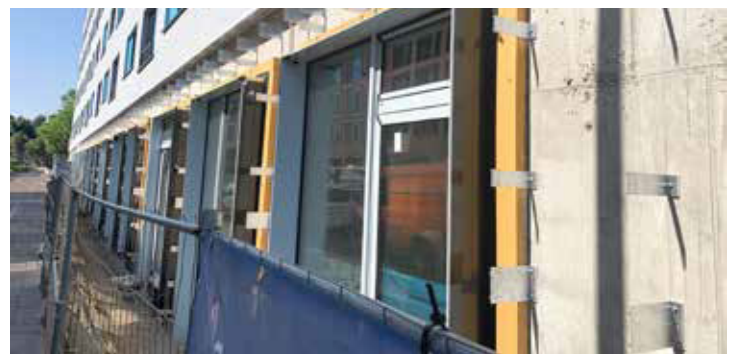
Phonotherm® - Reference Project Fischerinseln Berlin

PHONOTHERM® INSTALLATION FRAME THE PROVEN SOLUTION FOR SOUND INSULATION, SUSTAINABILITY AND DURABILITY

Warmotech GmbH is pleased to present the successful project at Fischerinsel / Ecke Mühlendamm in 10179 Berlin-Mitte as a reference project. In this new construction on historic grounds, the focus was on enhanced sound insulation and sustainability of the materials used.

The project comprises a total of 210 rental apartments, of which 50% are subsidized and 126 apartments are barrier-free. Additionally, the new building accommodates 7 commercial units on the ground floor, including a small kindergarten. Furthermore, 49 furnished apartments have been realized, 7 of which are designed as student shared flats.

Additional amenities include a concierge service, dining options, a kindergarten, small-scale commercial spaces, a green courtyard area with two playgrounds, and a green roof serving as a retention roof. Construction began in December 2020 and was completed as scheduled in December 2023.



ADVANTAGES OF THE PHONOTHERM® INSTALLATION FRAME:

As part of the project, the Phonotherm® installation frame from Warmotech GmbH was used. This proven solution impressed with its numerous advantages, which played a key role in the success of the construction project:

- **Certified Panel Material:**
Thanks to our General Building Approval (AbZ) and the new European Technical Assessment (ETA), Phonotherm® meets all legal construction requirements for both national and European markets—guaranteeing quality and safety.
- **High Compressive Strength:**
With a compressive strength of over 7 N/mm² (7 MPa), Phonotherm® offers exceptional stability and load-bearing capacity, which is especially important for demanding construction projects.
- **Screw Pull-out and Bearing Strength:**
Phonotherm® features outstanding strength when using screws compared to other insulating construction materials, ensuring superior fastening reliability.
- **Versatile Sealing Options:**
Phonotherm® allows for easy and secure sealing with a wide range of common systems, including bitumen, liquid plastics, and adhesives. This guarantees flexibility and safety throughout the construction process.
- **Innovative Installation Systems Support Sustainability:**
The Phonotherm® installation frame meets the criteria of the German Sustainable Building Council (DGNB). Thanks to its environmentally friendly properties and resource-efficient manufacturing process, it contributes to sustainable construction and supports building certification according to DGNB standards.
- **Enhanced Sound Insulation:**
With a soundproofing performance of 39 dB, Phonotherm® ensures a quiet and comfortable living environment.
- **UV Stability and Durability:**
Phonotherm® installation frames are not only UV-stable but also resistant to ageing and decay, ensuring long-term reliability and durability.
- **Environmentally Safe:**
Phonotherm® installation frames are non-toxic and safe for building biology.
- **Rapid Availability:**
Phonotherm® installation frames are delivered in custom dimensions within the shortest possible time, accelerating the construction process.

For over 20 years, Ecological Building Systems has been at the forefront of environmental and sustainable building products supplying a range of innovative airtightness solutions and natural insulations backed up with expert technical support.

As product suppliers in the UK and Ireland, we're happy to assist you with your projects and have expert technical and sales advice on hand.



Call us

Great Britain +44 (0)1228 711511

Ireland +353 46 9432104



Email us

info@ecologicalbuildingsystems.com



Find us

Great Britain Ecological Building Systems UK Ltd.,
Cardewlees, Carlisle, Cumbria, CA5 6LF,
United Kingdom

Ireland Ecological Building Systems Ltd.,
Main Street, Athboy. Co. Meath, C15 Y678,
Republic of Ireland