

Installation instructions

KAFLEX

Grommets for 1 or 2 cables



1. Pull the cable through and align

Pull the cable through the pre-punched hole in the EPDM, guide the grommet as far as the subsurface and align. Suitable for cables with a diameter of 4.8 - 12 mm ($\frac{3}{16}$ " - $\frac{1}{2}$ ").

Also for exterior use: black backing fleece not visible behind open-jointed cladding.



2. Remove the release film

Gradually remove the release film.



3. Tape the grommet and rub firmly to secure the adhesive bond

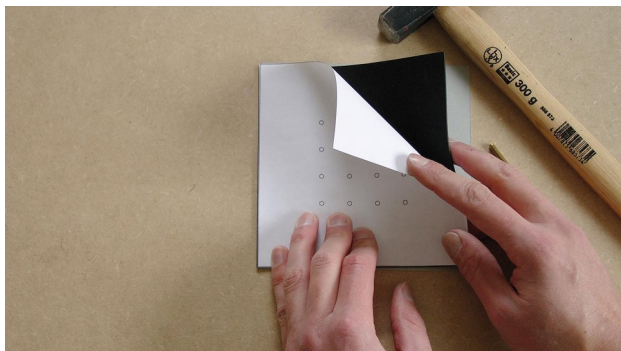
Tape the grommet to the subsurface and rub the tape firmly to secure the adhesive bond. Ensure that there is sufficient resistance pressure. This work can be carried out more efficiently and in a manner that is kinder to your hands by using the PRESSFIX application tool.



Also available for 2 cables

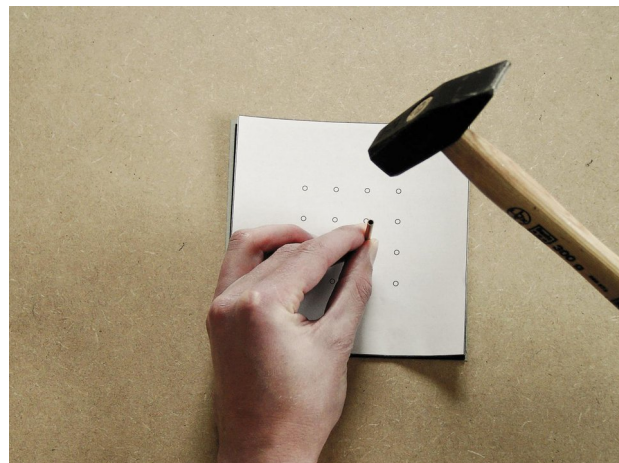
KAFLEX is also pre-fabricated with two holes in the EPDM for quick and reliable penetrations with two cables of diameters of 4.8 - 12 mm ($\frac{3}{16}$ " - $\frac{1}{2}$ ").

Multi-cable grommet, for up to 16 cables



1. Align the underlay, EPDM and punchhole template

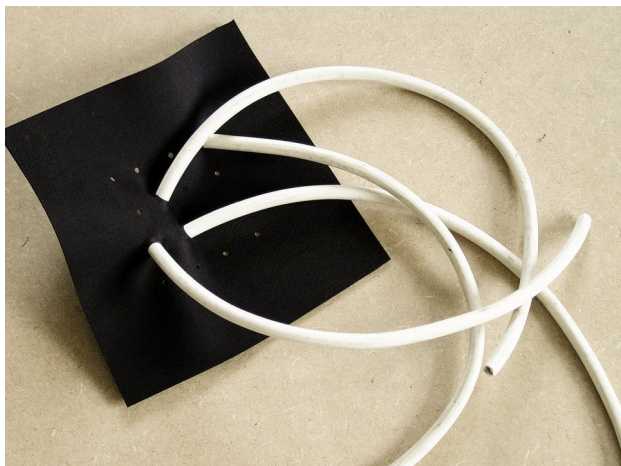
Place the EPDM grommet on a cardboard underlay, place the template for punchholes on top of it, and adjust the template to the correct position.



2. Punch out holes

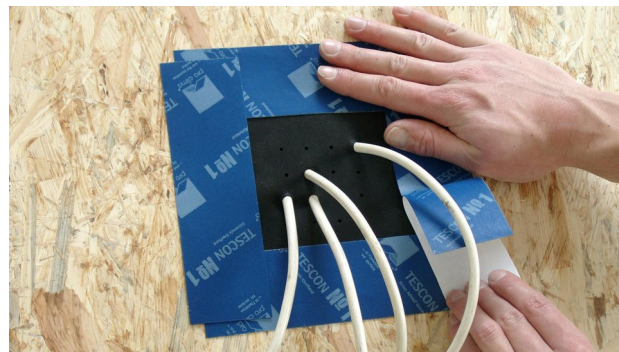
Punch out the required number of holes using the brass tube and hammer that are supplied.

Please note: Punching must be carried out on a subsurface that does not need to be protected against damage. The cardboard base does not provide sufficient protection for surfaces that are easily damaged.



3. Pull cables through

Pull cables with diameters of 4.8 - 12 mm ($\frac{3}{16}$ " - $\frac{1}{2}$ ") through the holes that have been created in the EPDM grommet.



4. Stick the grommet

Press the grommet into place so that it rests flat on the subsurface to be sealed, clean the subsurface and then stick using TESCO VANA (or TESCO INVIS). Rub the tape firmly to secure the adhesive bond.

Use of the special ROFLEX 15-30 mm grommet for multiple conduits is recommended if a number of conduits are to be reliably integrated into the airtightness layer.

Substrates

Clean subsurfaces before sticking. Adhesion to frozen surfaces is not possible. There must be no water-repellent substances (e.g. grease or silicone) on surfaces where adhesives are to be applied. Subsurfaces must be sufficiently dry and stable.

Permanent adhesion is achieved on all pro clima interior and exterior membranes, other vapour control and airtight membranes (e.g. those made of PE, PA, PP and aluminium) as well as other roof and breather (WRB) membranes (e.g. those made of PP and PET).

Adhesive bonds are possible on planed and painted wood, hard plastics and metal (e.g. pipes, windows etc.), hard wood-based panels (chipboard, OSB, plywood, MDF and wood-fibre underlay panels). Pre-treatment with TESCO PRIMER is required in the case of adhesion to wood-fibre underlay panels and smooth mineral substrates. Concrete or plaster substrates must not be sandy or crumbling.

The best results in terms of structural stability are achieved on high-quality substrates. It is your responsibility to check the suitability of the subsurface; adhesion tests may be necessary in certain cases. Pre-treatment with TESCO PRIMER is recommended in the case of substrates with insufficient stability.

General conditions

The adhesive bonds should not be subjected to tensile strain. Rub the adhesive tapes firmly to secure the adhesive bonds. Ensure that there is sufficient resistance pressure.

Windproof, airtight or rainproof sealing can only be achieved on vapour control membranes, roofing underlays or breather (WRB) membranes that have been laid without folds or creases. Ventilate continuously and systematically to prevent build-up of excessive humidity; use a dryer if necessary.

The information provided here is based on practical experience and the current state of knowledge. We reserve the right to make changes to the recommended designs and processing or to make alterations due to technical developments and associated improvements in the quality of our products. We would be happy to inform you of the current technical state of the art at the time you use our products.

Further information about installation and design details is available in the pro clima planning documentation. If you have any questions, please contact [pro clima Technical Support](<https://proclima.com/service/technical-support>).

MOLL**bauökologische Produkte GmbH**

Rheintalstraße 35 - 43

D-68723 Schwetzingen

Fon: +49 (0) 62 02 - 27 82.0

eMail: info@proclima.de

For over 20 years, Ecological Building Systems has been at the forefront of environmental and sustainable building products supplying a range of innovative airtightness solutions and natural insulations backed up with expert technical support.

As product suppliers in the UK and Ireland, we're happy to assist you with your projects and have expert technical and sales advice on hand.



Call us

Great Britain +44 (0)1228 711511

Ireland +353 46 9432104



Email us

info@ecologicalbuildingsystems.com



Find us

Great Britain Ecological Building Systems UK Ltd.,
Cardewlees, Carlisle, Cumbria, CA5 6LF,
United Kingdom

Ireland Ecological Building Systems Ltd.,
Main Street, Athboy. Co. Meath, C15 Y678,
Republic of Ireland