

# Installation instructions

## CONTEGA<sup>®</sup> SOLIDO EXO

### Sub-sill on timber projects



#### 1. Prepare the window opening

Preparatory step for window installation on timber construction projects

Tape and seal the structure surface, window reveals and all joints so that they are airtight and watertight against driving rain.



#### 2. Side details

In the case of reveal plates or a rear-ventilated structure, allow EXTOSSEAL ENCORS to run approx. 10 to 15 cm up each reveal side. If the reveal surfaces are to be plastered, run the sill tape up approx. 6 cm or else to the upper edge of the window sill profile.



#### 3. Apply tape to the sill surface

Apply EXTOSSEAL ENCORS to the sill surface, extending it at least as far as the inner edge of the window profile or – if necessary – across the entire depth of the structure. Allow an excess of at least 2 cm on the outside, or else as far as a suitable drip profile.

A sloped wall surface under the window will drain off water.



#### 4. Extend the sub-sill to the outside

In the case of a rear-ventilated facade, stretch the tape in the corners (without damaging it) and stick it to a suitable subsurface, e.g. SOLITEX FRONTA WA. Rub EXTOSSEAL ENCORS using the PRESSFIX tool to secure the adhesive bond.

## Sub-sill on masonry and concrete projects



### 1. Apply a smooth plaster finish to the window opening

Preparatory step for window installation on masonry and concrete construction projects

Apply a smooth plaster finish to the side and bottom areas where seals are to be installed.

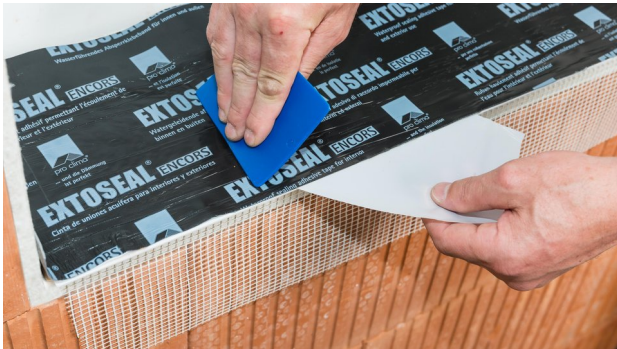
If a plaster finish or sealing filler is applied to the wall area under the window, the transition to the side reveals can be sealed with EXTONSEAL ENCORS to cover any possible cracks (capillary gaps). A sloped wall surface under the window will drain off water.



### 2. Side details

If the reveal surfaces are to be plastered, allow EXTONSEAL ENCORS to run approx. 6 cm up each reveal side or else to the upper edge of the window sill profile.

In the case of reveal plates or a rear-ventilated structure, allow approx. 10 to 15 cm here.



### 3. Apply tape to the sill surface

Apply EXTONSEAL ENCORS to the sill surface, extending it at least as far as the inner edge of the window profile or – if necessary – across the entire depth of the structure.

Stick the excess tape on the outside to a suitable drip profile.

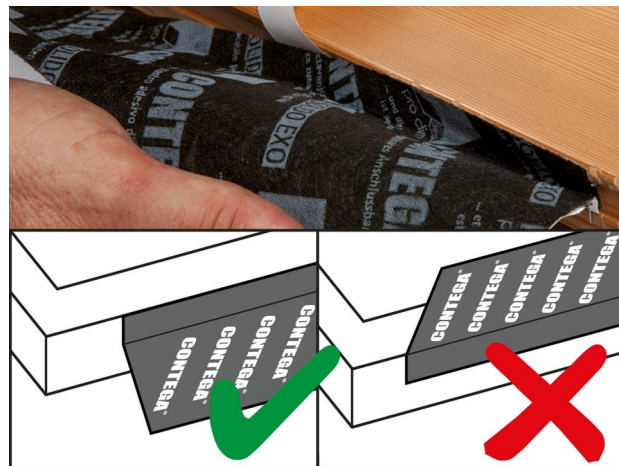


## Installation steps: Pre-installation before window mounting



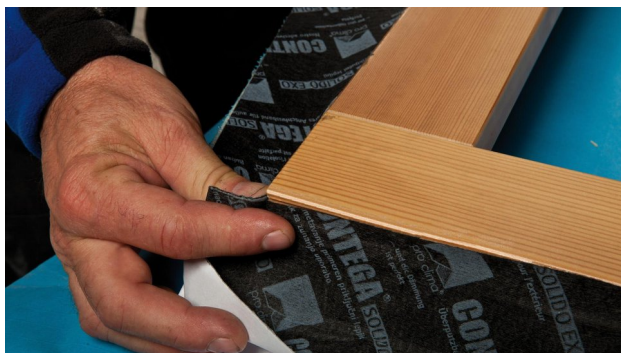
### 1. Window to be mounted into a timber, masonry or timber structure

CONTEGA SOLIDO EXO is to be pre-installed before the window is mounted. The frame is laid out flat with the exterior side of the frame facing up. The open ends of the window profile have been filled and the filling/sealing profiles have been attached.



### 2. Start applying tape at the top of the frame

Remove the narrow release film strip, position the tape on the side of the frame flush with the frame edge and then stick in place. The fleece side of the tape should extend downwards here. Rub using the PRESSFIX application tool to secure the adhesive bond. If tape application is started at the side of the window frame, ensure that the tape overlap is executed in a water-resistant manner.



### 3. Create corner folds

Create corner folds as shown here to make it easier to create a reliable seal to the window reveal at the corners later on. The size of the corner folds should correspond to around 1.5 times the joint width.



### 4. Apply tape all around frame and rub to secure

When finished, cut the tape, allowing approx. 5 cm (2") of an overlap. Stick the ends to each other on the frame.



### 5. Install the window and insulate the joint

Fold in the CONTEGA SOLIDO EXO tape so that it is not in the way, and then mount the window using a suitable fastening system. Fill in the joint with a suitable insulation material, leaving no cavities.



### 6. Stick the tape to the reveal all around the frame and rub to secure

Remove the remaining release films and gradually stick the tape to the reveal all around the window frame, allowing slack to accommodate relative motion between components. Rub using the PRESSFIX application tool to secure the adhesive bond.

## Installation steps: Window already mounted



### 1. The window is already mounted

The window joint on an already mounted window is to be sealed with CONTEGA SOLIDO EXO, in combination with EXTOSSEAL ENCORS.



### 2. Create a sub-sill

Use the EXTOSSEAL ENCORS sub-sill tape to create a sub-sill as a second waterproof layer. Guide the tape into the corners precisely and also run it to a height of approx. 6-15 cm (2½" - 6") on the reveals on each side depending on the type of facade used. Close off any open profile ends and groove ends using a suitable sealant.



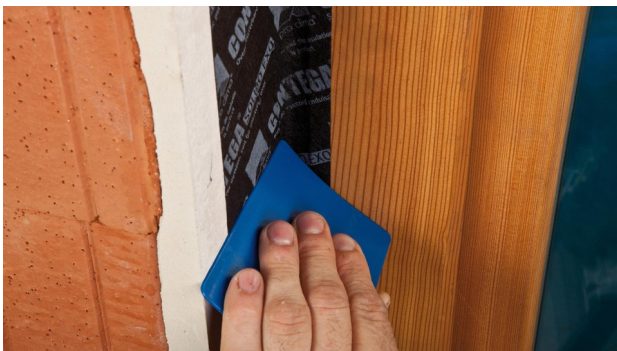
### 3. Cut the CONTEGA SOLIDO EXO window-sealing tape to length

Add approx. 8 cm (3¼") to the height of the frame and cut this length of tape.



### 4. Start applying tape at the top of the frame

Allowing CONTEGA SOLIDO EXO to extend about 4 cm (1½") onto the lintel surface from the corner, start applying the narrow adhesive strip of the tape onto the lintel and the reveal. Guide the tape along the vertical window frame as far as the sub-sill. Remove the remaining release film strips and stick the tapes to the reveal, allowing slack to accommodate relative motion between components. Apply tape in an analogous manner in the lintel area. Close off any open groove ends using a suitable sealant.



### 5. Carry out installation work carefully

Careful taping with no gaps is a prerequisite for windtightness and resistance to driving rain. Rub using the PRESSFIX application tool to secure the adhesive bond.

## Substrates

Clean subsurfaces before sticking. Uneven mineral subsurfaces may need to be levelled with a smooth plaster finish. Adhesion to frozen surfaces is not possible. There must be no water-repellent substances (e.g. grease or silicone) on surfaces where adhesives are to be applied.



Observe the recommendations for plastering over adhesive tapes that are specified by the producer of the plaster. In most cases, it is recommended that the width of adhesive tape that is to be plastered over should not exceed 60 mm (2 3/8") or 50% of the reveal area. Subsurfaces must be sufficiently dry and stable.

Permanent adhesion is achieved on all pro clima interior membranes and on other vapour control and airtight membranes (e.g. those made of PE, PA, PP and aluminium). Tapes can be applied to planed or painted wood, hard plastics, hard wood-based panels (chipboard, OSB and plywood panels). For sealing joints on masonry or concrete or on rough substrates, use ORCON F.

The best results in terms of structural stability are achieved on high-quality subsurfaces. It is your responsibility to check the suitability of the subsurface; adhesion tests may be necessary in certain cases. Pre-treatment with TESCON PRIMER is recommended in the case of subsurfaces with insufficient stability.

## General conditions

Taped joints should not be subjected to tensile strain. Rub the adhesive tapes firmly to secure the adhesive bonds. Ensure that there is sufficient resistance pressure. Seals that are windproof and resistant to driving rain can only be achieved if the sealing tape is installed free of folds and breaks.

When plastering, please observe the recommendations of the plaster manufacturer for non-absorbent subsurfaces. A bonding course may be necessary.

---

The information provided here is based on practical experience and the current state of knowledge. We reserve the right to make changes to the recommended designs and processing or to make alterations due to technical developments and associated improvements in the quality of our products. We would be happy to inform you of the current technical state of the art at the time you use our products.

Further information about installation and design details is available in the pro clima planning documentation. If you have any questions, please contact [pro clima Technical Support](<https://proclima.com/service/technical-support>).

---

### MOLL

**bauökologische Produkte GmbH**

Rheintalstraße 35 - 43

D-68723 Schwetzingen

Fon: +49 (0) 62 02 - 27 82.0

eMail: [info@proclima.de](mailto:info@proclima.de)

---

For over 20 years, Ecological Building Systems has been at the forefront of environmental and sustainable building products supplying a range of innovative airtightness solutions and natural insulations backed up with expert technical support.

**As product suppliers in the UK and Ireland, we're happy to assist you with your projects and have expert technical and sales advice on hand.**



**Call us**

**Great Britain** +44 (0)1228 711511

**Ireland** +353 46 9432104



**Email us**

[info@ecologicalbuildingsystems.com](mailto:info@ecologicalbuildingsystems.com)



**Find us**

**Great Britain** Ecological Building Systems UK Ltd.,  
Cardewlees, Carlisle, Cumbria, CA5 6LF,  
United Kingdom

**Ireland** Ecological Building Systems Ltd.,  
Main Street, Athboy. Co. Meath, C15 Y678,  
Republic of Ireland