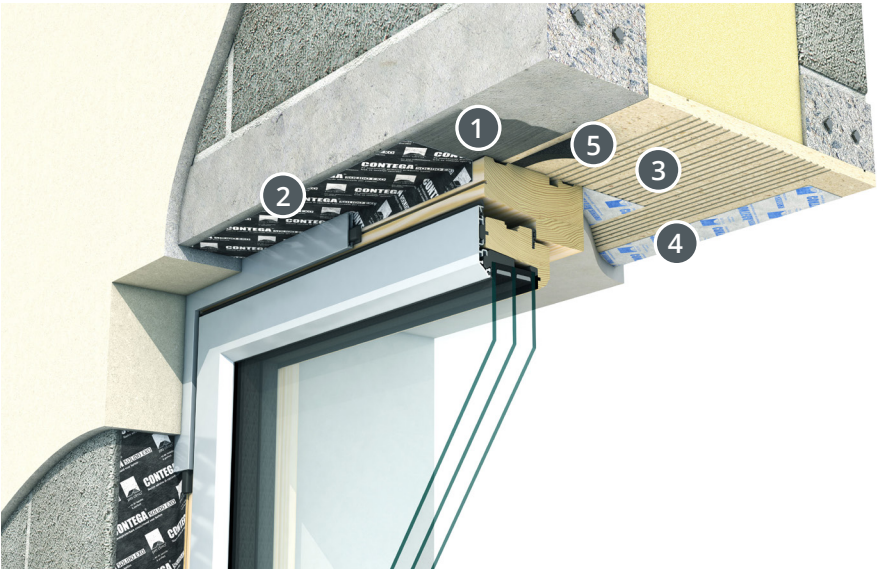


# Making Windows and Doors Airtight, Windtight and Thermally Efficient

Window Head Detail



- 1

**Tescon Primer RP**

Airtight tape surface primer to ensure tapes have a robust bond on the surface.
- 2

**Contega Solido Exo**

Plasterable external windtight and water resistant tape for sealing windows and doors.
- 3

**Warmotech Phonotherm**

Compressive resistant structural insulation board.
- 4

**Contega Solido SL**

Plasterable airtight sealing tape for sealing masonry to window frames.
- 5

**Contega Fiden Exo**

Pre-compressed joint sealing tape for exterior use.

Timberframe Window Sill Detail



- 1

**Tescon Profil**

Airtight corner tape with two release strips for easy sealing.
- 2

**Contega Fiden Exo**

Pre-compressed joint sealing tape for exterior use.
- 3

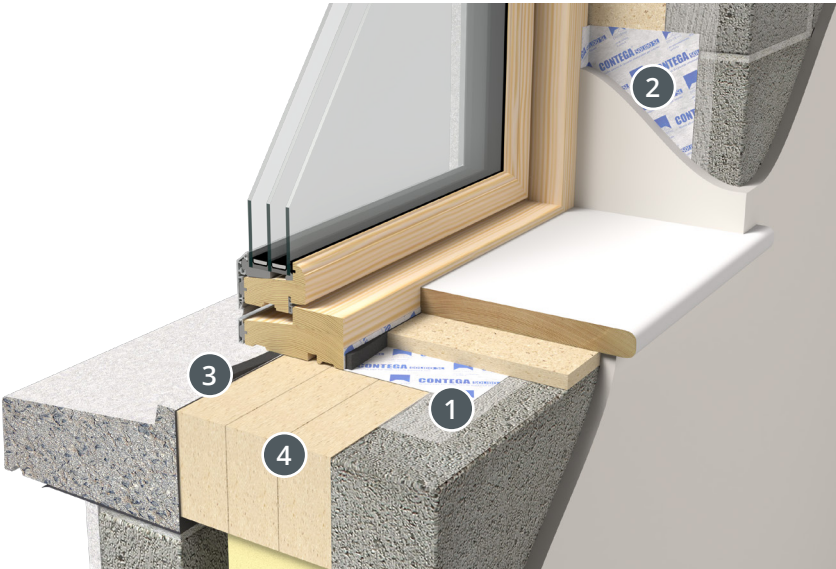
**Extoseal Encors**

Weatherproof butyl flashing tape for sealing around window sills.
- 4

**Warmotech Phonotherm**

Compressive resistant structural insulation board.

Masonry Window Sill Detail



- 1

**Tescon Primer RP**

Airtight tape surface primer to ensure tapes have a robust bond on the surface.
- 2

**Contega Solido SL**

Plasterable airtight sealing tape for sealing masonry to window frames.
- 3

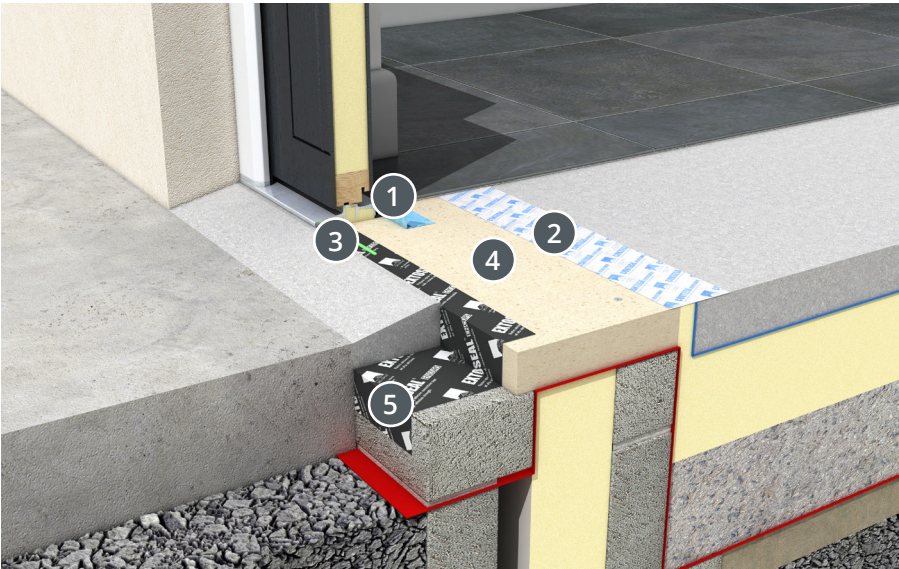
**Contega Fiden Exo**

Pre-compressed joint sealing tape for exterior use.
- 4

**Warmotech Phonotherm**

Compressive resistant structural insulation board.

Door Threshold Detail



- 1

**Tescon Profil**

Airtight corner tape with two release strips for easy sealing.
- 2

**Contega Solido SL**

Plasterable airtight sealing tape for sealing masonry to door frames.
- 3

**ORCON F**

Flexible airtight adhesive between tape and surface.
- 4

**Warmotech Phonotherm**

Compressive resistant structural insulation board.
- 5

**Extoseal Encors**

Weatherproof butyl flashing tape for sealing around door sills.



# Technical Sales Service and Back Up

Ecological Building Systems is pleased to provide technical advice on how to incorporate Pro Clima products into different forms of constructions for new build and refurbishment projects.

- Technical customer service and on-site support
  - Specifications and NBS clauses
  - WUFI, U-value and condensation risk assessments
  - Airtightness and windtightness guidance
- CPDs and airtightness installation training
  - Airtight installation videos and technical resources
  - In-depth technical reports, studies and samples
  - In-house drawing review, consultation service and training centre access

Products have been independently tested and may hold the following certifications. Please refer to our website for product-specific details.



While every effort has been made to ensure the accuracy of the information provided in this brochure, we cannot accept responsibility for any errors or omissions. It is recommended to verify all details, product suitability, and installation practices to ensure they meet the specific requirements of your project.

For further information contact:

## IRELAND

T: +353 (0) 46 9432104

F: +353 (0) 46 9432435

E: [info@ecologicalbuildingsystems.com](mailto:info@ecologicalbuildingsystems.com)

## UK

T: +44 (0) 1228 711511

F: +44 (0) 1228 712280

[www.ecologicalbuildingsystems.com](http://www.ecologicalbuildingsystems.com)

# Why Pro Clima?

Founded in Germany in 1994 and now active worldwide, Pro Clima pioneered energy efficiency and healthy buildings with their range of high-performance airtight and windtight membranes, tapes and sealants. Manufactured to the highest quality standards, Pro Clima products ensure optimum durability, reliability and energy efficiency on your project. The Pro Clima range is solely distributed in Ireland and UK by Ecological Building Systems working in partnership with trained stockists and installers.

## What is airtightness?

Airtightness is a building's resistance to air leakage, or how air flows in and out through unintended gaps in the building envelope. While ventilation is planned, air leakage is a result of poor design detailing or installation, or use of inappropriate materials.

Pro Clima's range of durable membranes, tapes and sealants offer innovative easy-to-install solutions to meet even the most stringent airtightness standards including Passivhaus. Better airtightness provides optimised occupant comfort, lower energy bills and longer-lasting healthier buildings. The key is to "build tight and ventilate right".

A house with a living space of 80m<sup>2</sup> and inadequate airtightness uses just as much heating energy as an airtight house with a living space of around 400m<sup>2</sup>.

Source: Pro Clima



# Window Sealing Systems Guide



Discover our solutions online at [ecologicalbuildingsystems.com](http://ecologicalbuildingsystems.com)

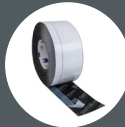
## Additional Pro Clima Windows Materials



### Contega Solido SL-D

Pre-installation window and door sealing tape with double sided seal for easier pre-fitting.

Used for interior airtight sealing of windows and doors.



### Contega Solido Exo-D

Full-surface adhesive tape with an additional adhesive zone for easier pre-fitting.

Used for exterior airtight, weatherproof, and windtight sealing of windows and doors.



### Tescon Profect

Pre-folded airtight adhesive tape for use on corners and junctions.

Used for interior and exterior sealing of window and door junctions.



### Tescon Vana

Multi-purpose airtight adhesive tape.

Used for airtight seal of membrane overlaps, edges and connections to airtight accessories.



### Aerosana Visconn Fibre

Sprayable or brush applied airtight liquid membrane.

Used for sealing gaps of up to 20mm or junctions to adjoining building elements.



---

For over 20 years, Ecological Building Systems has been at the forefront of environmental and sustainable building products supplying a range of innovative airtightness solutions and natural insulations backed up with expert technical support.

**As product suppliers in the UK and Ireland, we're happy to assist you with your projects and have expert technical and sales advice on hand.**



**Call us**

**Great Britain** +44 (0)1228 711511

**Ireland** +353 46 9432104



**Email us**

[info@ecologicalbuildingsystems.com](mailto:info@ecologicalbuildingsystems.com)



**Find us**

**Great Britain** Ecological Building Systems UK Ltd.,  
Cardewlees, Carlisle, Cumbria, CA5 6LF,  
United Kingdom

**Ireland** Ecological Building Systems Ltd.,  
Main Street, Athboy. Co. Meath, C15 Y678,  
Republic of Ireland